

# LIVE VIEW SPORTS



LVStudio

*User Manual*

(V1.5 - iOS)



# Table of Contents

---

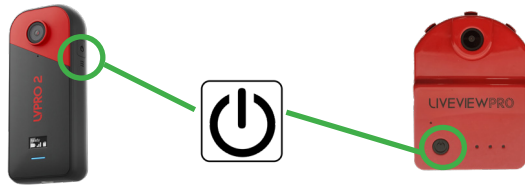
1	Connecting the Camera	4
2	Home Screen Overview	6
3	Live Camera	8
4	Swing Recording	9
5	Video Player	13
6	My Practice	16
7	Split Screen	20
8	LVSync	23
9	Content Download	30
10	Settings	31

# 1 Connecting the Camera

Make sure your LVPro or LVPro2 camera is connected to your iOS device via WiFi before launching the LVStudio App.



## a. Step 1

Power up your camera by pressing and holding the power button for 3 seconds.

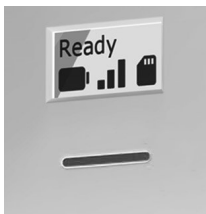


## b. Step 2

Select the LVPro or LVPro2 Hotspot.

<p>1. Open Settings</p> 	<p>2. Choose WiFi Settings</p>  <b>Wi-Fi</b>	<p>3. Select LVGPro2 Wifi for LVPro2 (Password is "1234567890")</p> <p>or Select LVPro WiFi for LVPro There is no default password on the LVPro</p>	A screenshot of the iOS 'NETWORKS' list. The list contains three entries: '16881688', 'LVGPRO2_696B', and 'LiveViewGolf_fa207ad0'. The last two entries are highlighted with red rectangular boxes. Red arrows point from the text in the previous column to these two entries.
---	---	---	---

## c. Step 3 (LVPro2 Connection Trouble Shooting)



NOTE: Only one device can be connected to the LVPro2 at a time.

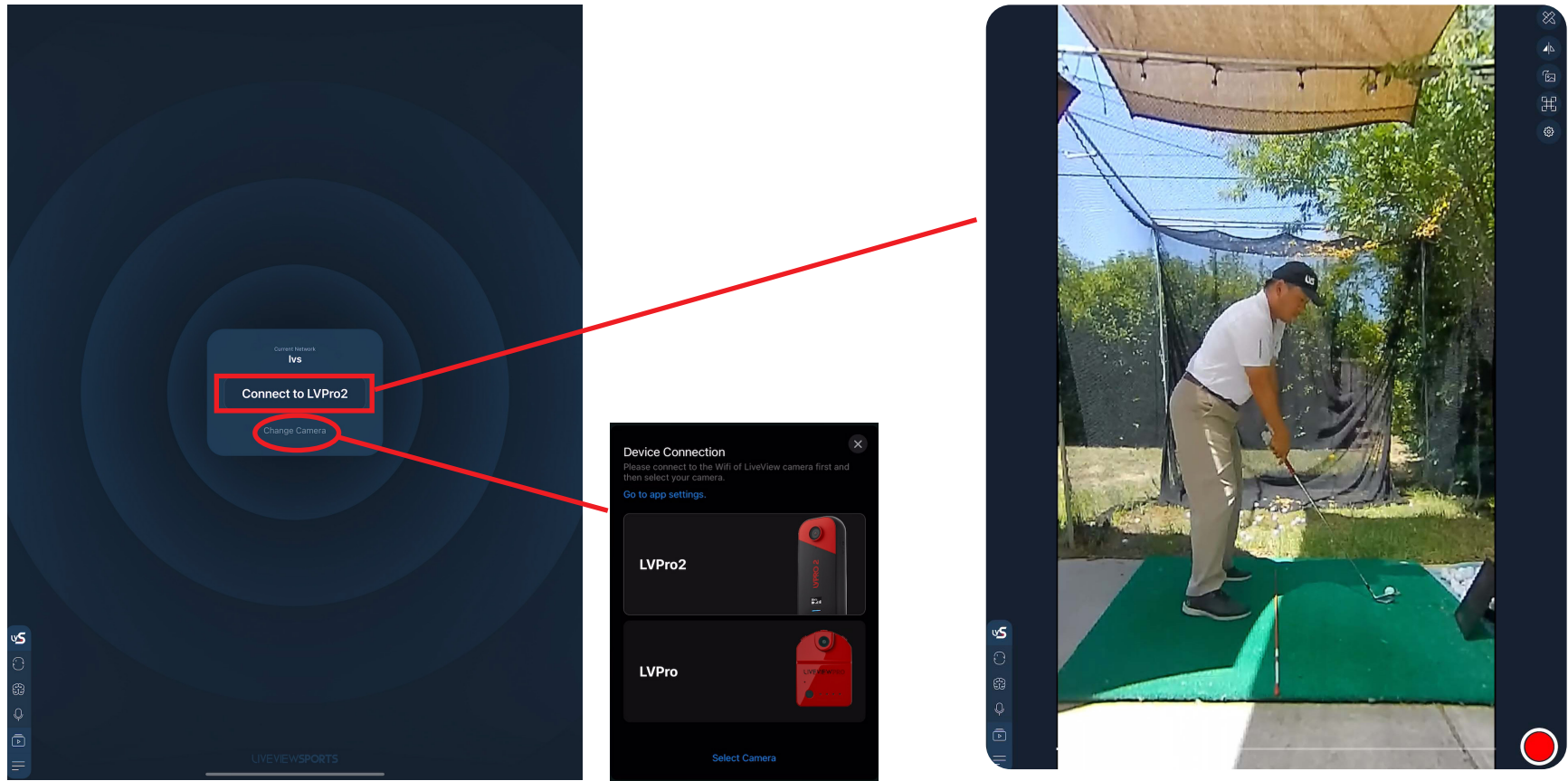
If the LVPro2 cannot connect, check to make sure that the camera is not already connected to another device. Check the LVPro2 MFD for message feedback. If the MFD message reads "Ready" another device is already connected to the camera and must be disconnected before connecting the new device. The MFD should read "**Waiting**" in order to connect your device.



# 1 Connecting the Camera

## d. Step 4

Connect to camera



*Check that the Camera description matches your model.*

*If the model does not match, choose the correct camera, before connecting.*

*LVPro and LVPro2 use different video protocols and are not compatible. You will not get video if you select the incorrect camera.*

## 2 Home Screen Overview

**Display Functions**

- Draw lines, circles, rectangles and other objects.
- Flip video to match movements for front facing video.
- Rotate video to match camera orientation (LVPro only)
- Apply grid overlay for reference.
- Quick Settings.

**Expand Full Menu**

- LVSync (Dual Camera)
- AI Trigger
- AI Swing Recording.
- Ball Strike Trigger
- Sound Trigger Recording
- Home Screen (Live Camera)
- Recorded Swing Library
- Settings
- User Profile

**Manual Recording Button**

## 2 Home Screen Overview

---

### Basic Function Overview

---

 **Live Camera**

#### 1. Live Camera (Section 3)

Live Camera provides a live video feed from the position of the LVPro2 or LVPro camera. This function creates a digital mirror that allows you to see yourself as you are moving.


---

 **Ball Strike Trigger**

#### 2. Swing Recording (Section 4)

There are 3 methods to record your swing:

- Manual Recording - uses button press to trigger countdown and then recording. Recording length is set in "Recording Settings"
  - Ball Strike Trigger - uses your device microphone to listen for a loud "clap" from ball strike to trigger a recording. Videos are trimmed automatically using a pre-strike recording buffer to show the entire swing sequence.
  - AI Trigger (LVPro2 only) - uses AI image analysis to detect if a full swing has been taken and triggers a recording based on the golfer's motions. Videos are trimmed automatically similarly to the Ball Strike Trigger. "AI Trigger" is only available on the LVPro2
- 

 **AI Trigger** **My Practice**

#### 3. Recorded Swing Library (Section 6)

See all recorded swings in the "My Practice" section.

---

 **Split Screen**

#### 4. Split Screen (Guided Mirroring) (Section 7)

Guided Mirroring loops a reference video of a prior or third party model swing for visual comparison during live practice.

---

 **LVSync**

#### 5. Dual Camera (Section 8)

LVSync can convert an additional iOS device into a second camera to enable simultaneous streaming and recording of two camera angles.

---

 **Content**

#### 6. Content Downloads (Section 9)

Download Content provides access to pre-built sample swings and lesson content from the LVS Cloud. Some content requires premium subscription and in-app payment. A registered Profile is required to access Content downloads.

---

 **Settings**

#### 7. Settings (Section 10)

Settings provide additional control over key features as well as access to hardware camera settings such as WiFi channel and custom SSID settings.

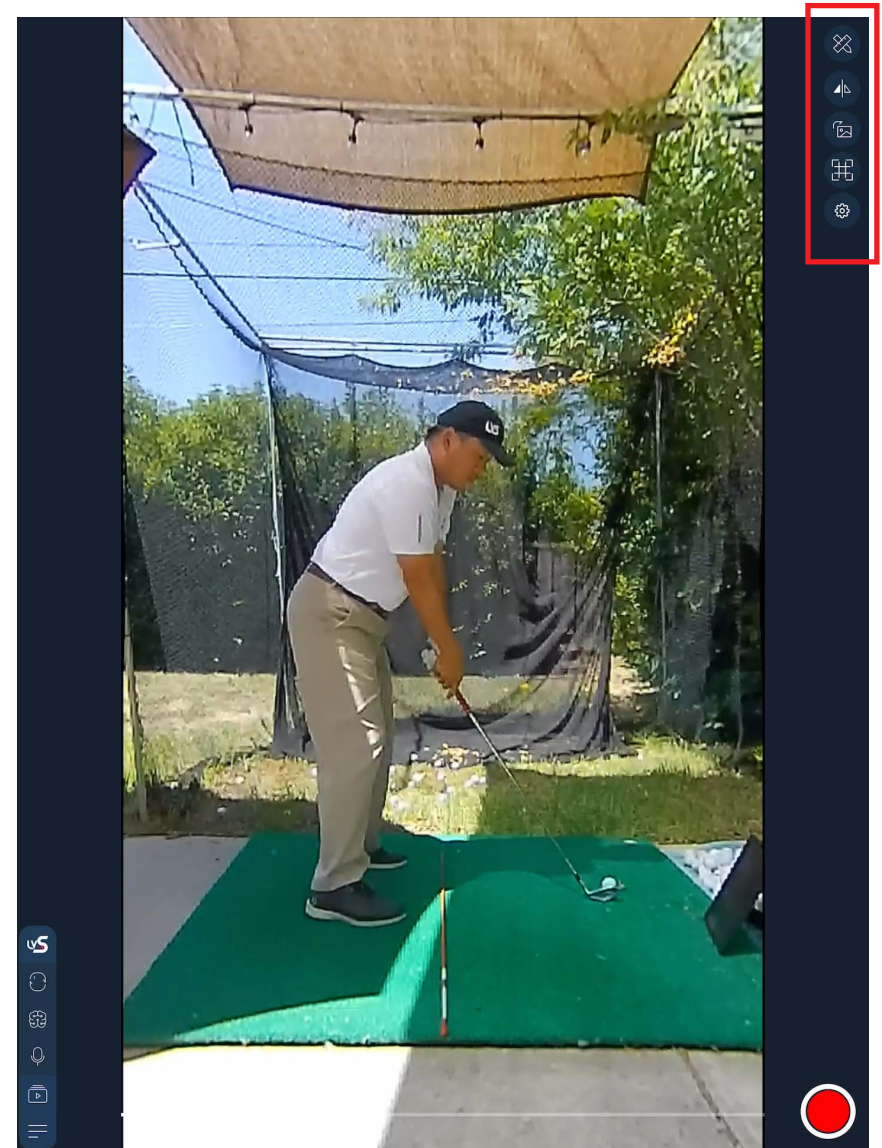
---

### 3 Live Camera

Live Camera provides a streaming video feed that works like a mirror to show you what you look like from a coach's eye. You can monitor your setup and takeaway to understand exactly what your ideal swing should feel like. Once you understand the difference between your current swing and the target swing, use Live Camera to groove the new feelings until you can get the correct movement based purely on the new feel.

### Live Tools

Digital Video can be adjusted with Live Tools to Flip Video to match your movements, create reference Grid overlays, rotate video to match camera alignment, or insert graphics to provide precise reference points for your practice:



Home Screen



## 4 Swing Recording

Swing recording is simple and convenient in LVStudio. You can use manual recordings, automatic recordings triggered by your ball strike and even automatic recording triggered by your movements when ambient noise makes sound trigger difficult. Automatic recordings are trimmed automatically to capture both the back swing and follow through.

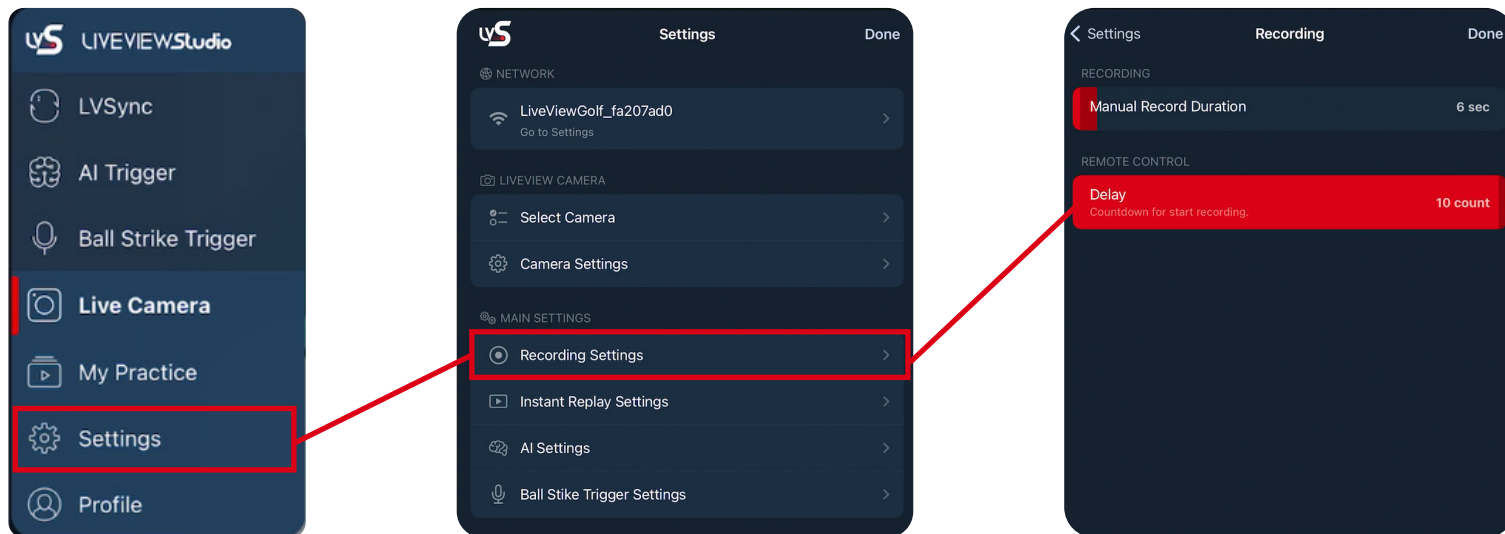


### a. Manual Recording



Trigger a manual recording by pressing the red button. A manual recording is a timed recording that runs for a set number of seconds and then stops automatically. Once a recording starts, the circle turns into a red square with a timer that counts up the recording time until the recording is complete. Manual recordings can also be stopped by pressing the red square during the recording duration.

Adjust the recording duration and countdown timer in the App Settings.

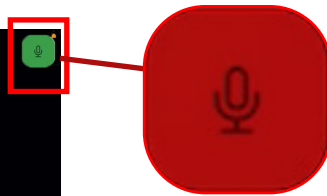


## 4 Swing Recording

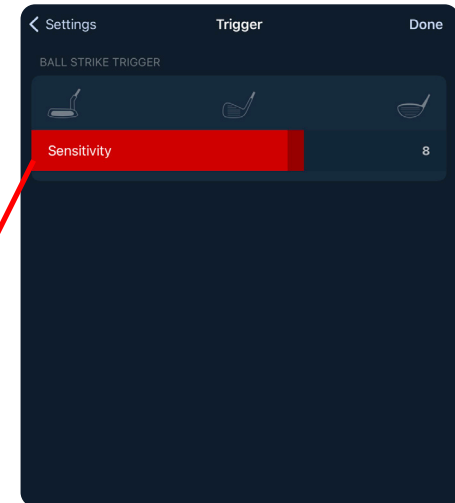
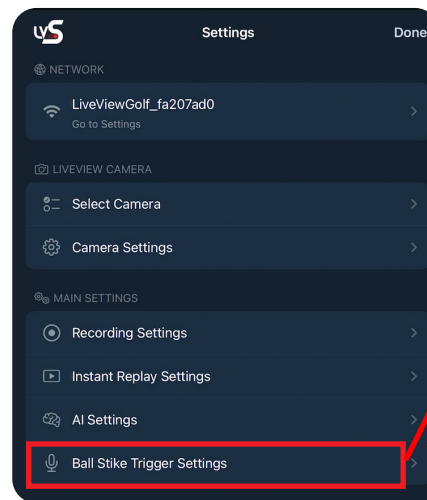
Ball Strike Trigger

### b. Sound Trigger

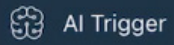
Pressing the "Ball Strike Trigger" button puts your device into listening mode represented by a green microphone in the top right corner. Any loud sound will then trigger a swing recording (red microphone) that includes an additional 2 seconds of backswing to capture the full swing sequence.



Adjust the sensitivity of the trigger to filter out background noise by setting the trigger to "loud". Make the trigger more sensitive to quiet sounds like a putter by setting it to "soft"

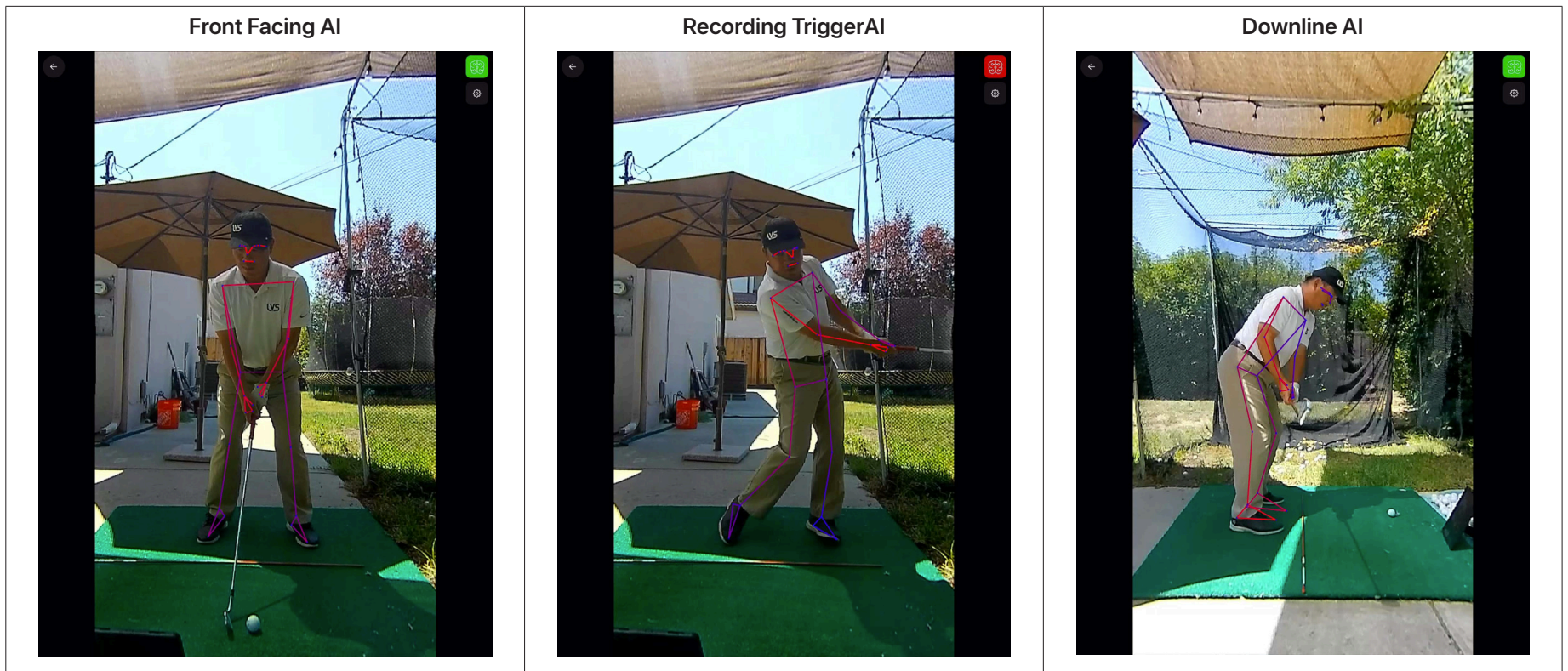


## 4 Swing Recording



### c. AI Trigger (LVPro2 Only)

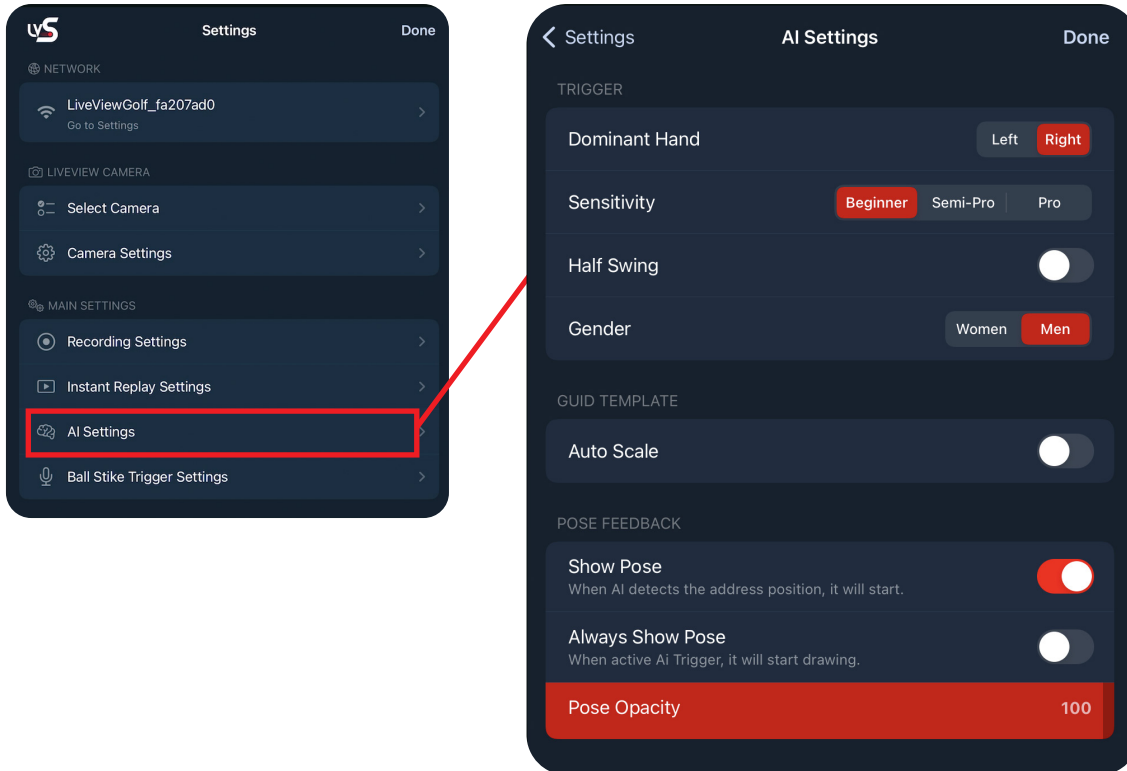
The LVPro2 camera hardware introduces AI Trigger that uses Artificial Intelligence to record swings by watching your video. AI Trigger presents a big leap over Sound Trigger because it allows use of the LVPro2 in noisy areas like most driving ranges. AI Trigger can follow your movements and knows when you are at ball address and when you've completed your swing.



When AI Trigger is active, address the ball and wait until LVStudio has acquired your body. You can see this when LVStudio draws lines over your body to track your movements. Once your body has been recognized, swinging through the ball will trigger a recording.

## 4 Swing Recording

### AI Settings



**Dominant Hand (Left/Right)** - if you swing golf left handed, change this setting to match your swing preference.

**Sensitivity** - This determines how strict the model looks at your swing. "Beginner" will make triggering the model easier, but may cause more false triggers from random motion. The "Pro" model - will only trigger when a more traditional golf swing is seen.

**Half Swing** - enables trigger from a 1/2 takeaway and 1/2 follow through.

**Gender** - Allows the model to adjust from women to men's swings.

**Auto Scale** - When drawing line and other objects in AI mode, AI Scale will automatically scale and apply the lines to fit your body.

**Show Pose** - AI pose lines are visible or hidden.

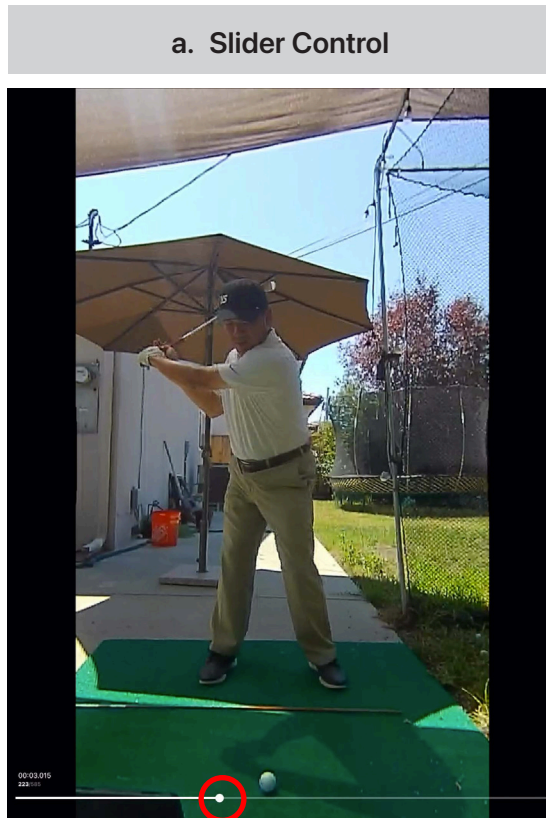
**Always Show Pose** - AI may hide the pose when no setup or swing is detected. This forces pose lines to stay on at all times.

**Pose Opacity** - adjust how opaque the pose line overlays are. set to "0" to hide lines and "100" to show lines clearly.

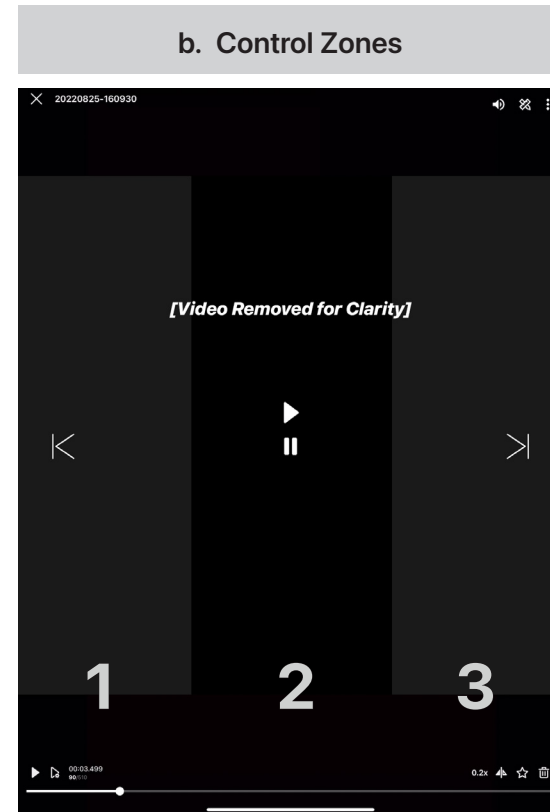


## 5 Video Player

The LVS video player triggers automatically after every recording. It is also available in the file library to review saved swings. By default most controls are hidden to present a cleaner interface. The only control visible is the progress bar which can be used to manually control playback and find specific frames.



<- [ ] ->  
use the button on the slider to fast forward and rewind your video

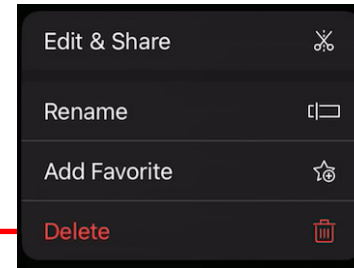
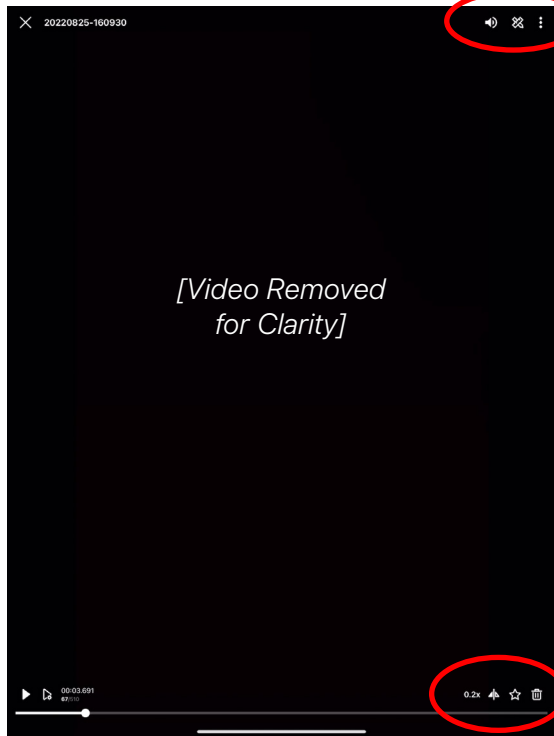


Control Zones:  
Tap anywhere in the control zone to apply player commands. This also opens additional controls

1. Frame by Frame (Back)
2. Play/Pause
3. (Frame by Frame (Forward))

# 5 Video Player

## c. Player Quick Controls



**1. Mute/UnMute** - Audio during playback

**2. Drawing** - Opens drawing tools for applying lines, circles and rectangles for analysis

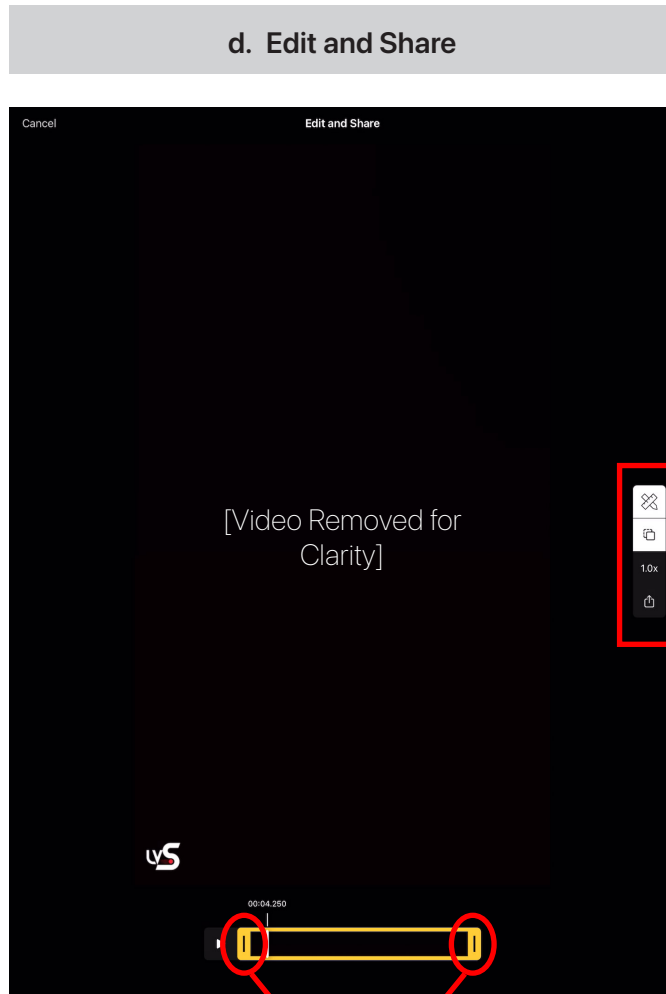
**3. Slow Motion** - Set Slow motion replay speed. Set speed 20%, 50%, 100%, 200% or even 400%

**4. Flip (mirror)** - Flips video to match point of view in front facing camera.

**5. Favorite** - Mark as favorite for future reference.

**6. Delete** - Delete video.

## 5 Video Player



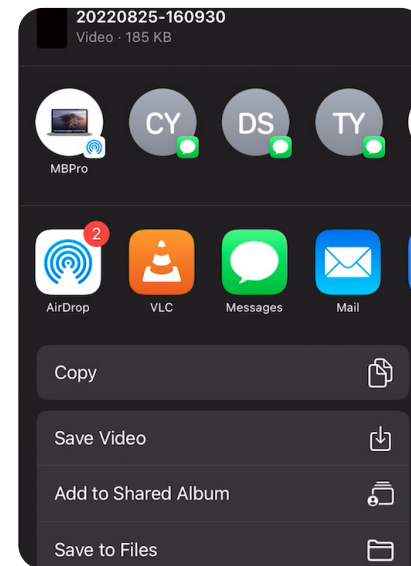
Drag the yellow bar end to trim beginning and end of the video.

**Lines** - Show/Hide Lines in exported file.

**Logo** - Show/Hide LVS Logo on export.

**Speed** - Set slow motion speed for exported file. Slow motion is speed less than 1.0.

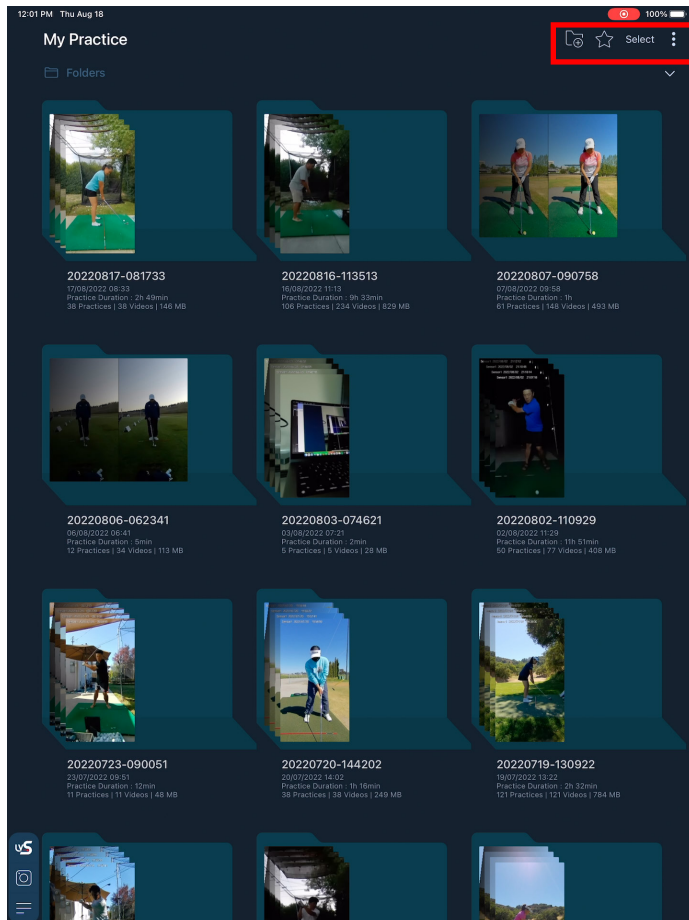
**Share** - Export file for sharing



# 6 My Practice

All swings are saved in "My Practice" and swings are automatically organized into folders. By default a new folder is created at the start of each session, but automatic folder creation is limited to once per calendar day. You can create additional folders manually. New swings are saved into the latest folder.

## a. Practice Library: Folders

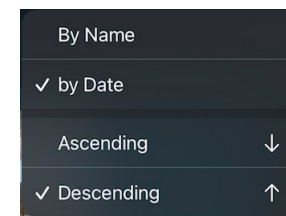


The key functions of the swing library are to:

- a. Delete Files and Folders
- b. Find Favorites
- c. Organize Swings (Folders)
  - New Folders
  - Merge Folders
  - Move Files between Folders.
  - Rename Files and Folders.
- d. Edit and Share
- e. Compare Swings.

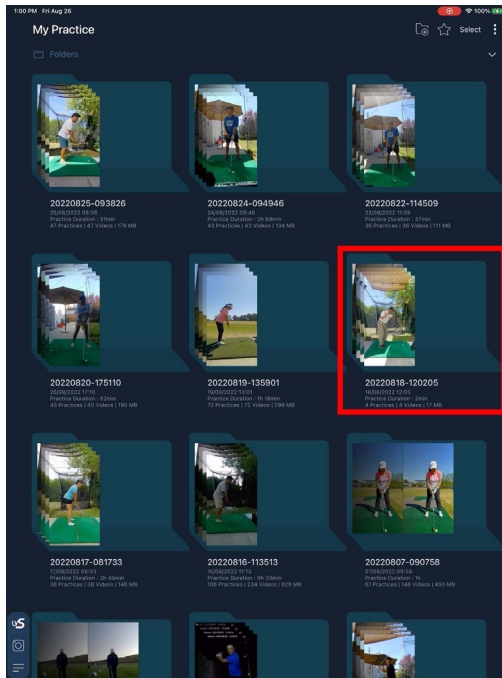


- Create New Folder
- Show "Favorite" Folders
- Select Folders (for delete, move or merge)
- Change Sort List Order

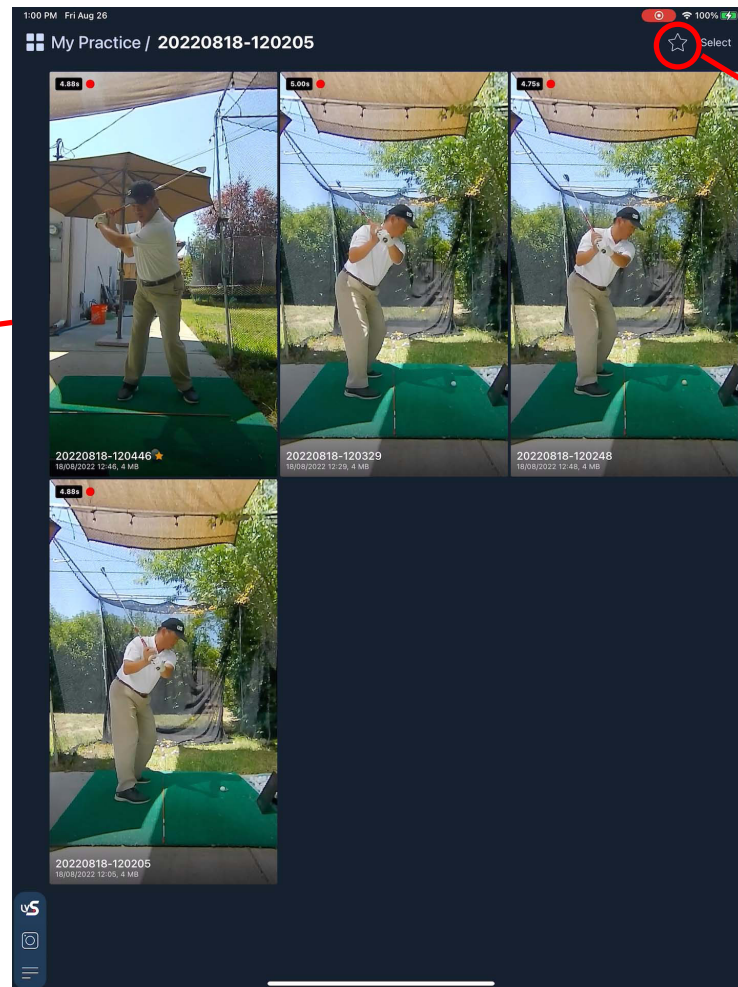


# 6 My Practice

## b. Practice Library: Files



Select a folder to see the contents in detail. Choosing a file will open the video player for editing or sharing.

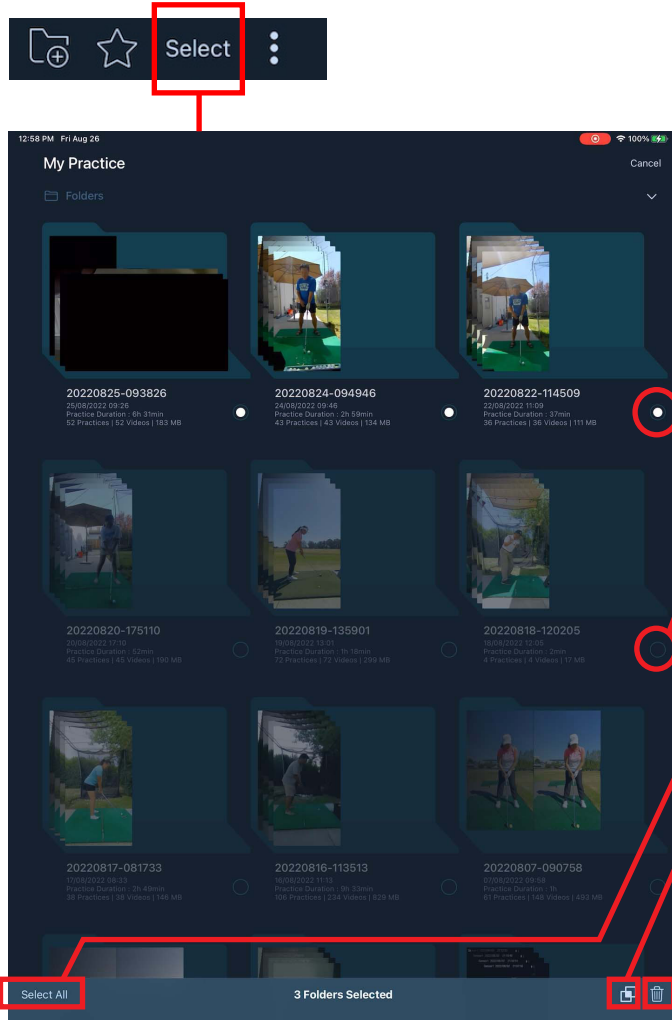


“Favorite”

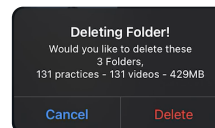
You can filter videos using the Favorite filter to reduce the number of videos shown.

# 6 My Practice

## c. Select Files and Folders

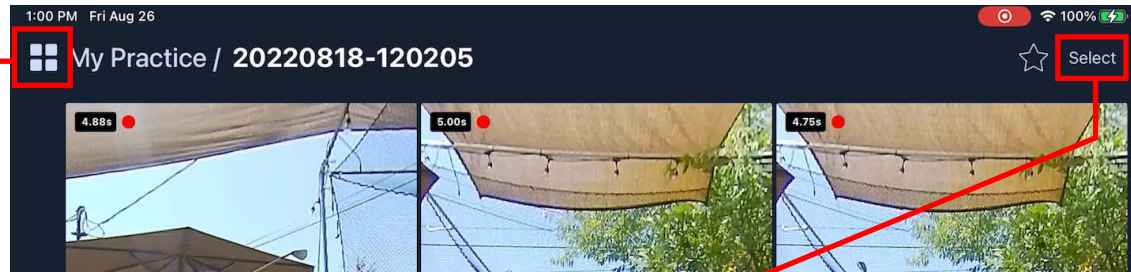


- **"Select"** dims each item and adds a selection circle option. Select an item by tapping on the empty circle. When an item is selected it will brighten and a dot will appear inside the "select option".
- **"Select All"** is a quick way to grab all items at once.
- **"Merge"** combines the contents of multiple folders into one.
- **"Delete Folder"** - deletes the folder and all contents. You will see a confirmation dialog prior to deleting.



# 6 My Practice

Return to Folder List



**"Select"** just like the folders, select dims each item and adds a selection circle option. Select an item by tapping on the empty circle. When an item is selected it will brighten and a dot will appear inside the "select option.

**"Select All"** is a quick way to grab all items at once.



**"Move"** you can move multiple files into a new directory.

**"Delete"** File - deletes the all selected files. You will see a confirmation dialog prior to deleting.



# 7 Split Screen

## Swing Copy using Split Screen

Split Screen allows you to play a second swing video while watching yourself with live mirroring. This process of real time comparison can produce results amazingly quickly as your eye can catch subtle differences in body angles and movement sequence that are essential to make real changes. We refer to the process of learning by watching and copying a reference swing as the "Swing Copy" method.



To Activate Split Screen, First connect to the LVPro or LVPro2 camera and then select the "Split Screen" from the Main Menu.



### 1. Use Split Screen in Portrait Mode

In order to optimize screen use, we recommend using your LVPro camera in portrait mode by physically rotating the camera 90 degrees. LVPro2 runs in portrait mode by default.



In portrait mode there will be wide black bars on the side of your screen.



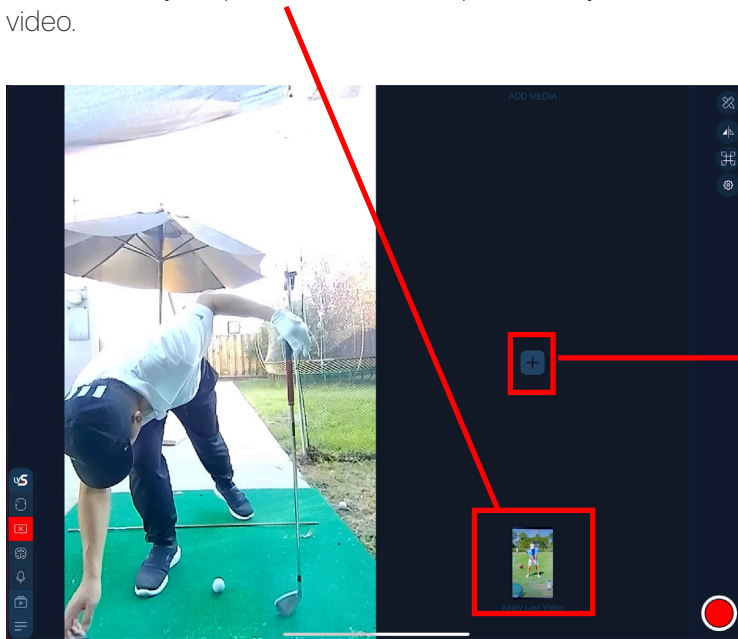


# 7 Split Screen

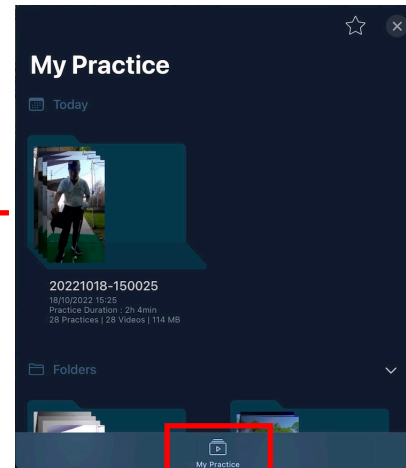
## 2. Select Split Screen Video

Activating Split Screen will move your live video to the left and create an empty window in the right 1/2 of the screen for display of your reference video.

Select either your previous video, or tap the "+" symbol to add a new video.



Selecting a new video will bring up your My Practice Library of past swings.



In the coming weeks you will be able to select sources outside of the "MyPractice" Folder by selecting "Photos" and other sources here.

# 7 Split Screen

## 3. Adjust Playback Settings

Videos are automatically set for looped playback. To pause playback and access the player controls simply tap anywhere on the "Split Screen".

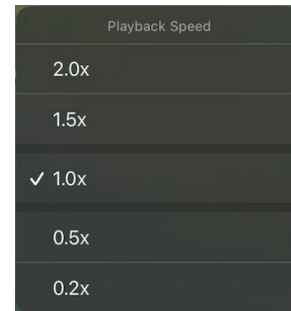


### Play/Pause

- Play or pause playback by tapping the middle of the Split Screen video.

### Speed

- Videos can be played back at various speeds to slow down or speed up reference videos for your practice.



### Change

- Use the "+" icon to change your video.

## What is LVSync

LVSync is a subscription add-on to your LVPro to enable dual camera capture for your practice sessions. The cost for the subscription is \$9.99 per month or \$99.99 for one year. When you subscribe for 1 year for the first time, you receive a 6 month free trial. Your first billing will not start until your trial expires and you can cancel for free anytime prior to that.



## What Do I Need

To Use LVSync You Need:

- 1 x LVPro Camera or LVPro2
- 2x iOS 15 Device: need one device for use as Viewer (usually iPad) and second for use as camera (usually iPhone)
- LVSync Subscription

Optional

- 2x LivePod 2: (can be any other tripod for holding the the LVPro/LVPro2 and the second iOS Devices as camera)



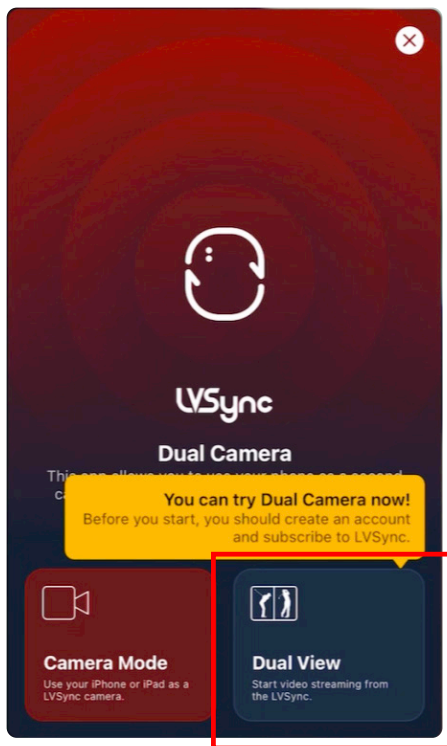
## How to Subscribe to LVSync

To subscribe to LVSync you have to

- Subscribe
- Create a user profile on our app.
- Launch LVSync

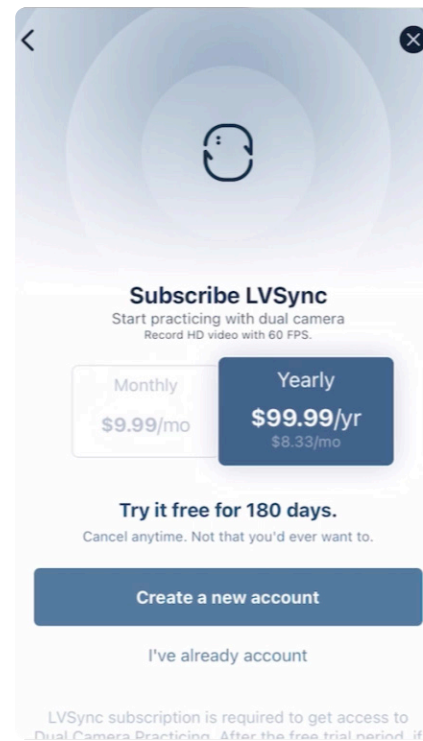
### a. Subscribing to LVSync

LVSync is a paid add-on that is billed through the Apple App Store. The cost is \$99.99 per year with a 6 month free trial. You can cancel your LVSync subscription at any time before the first billing without any cost. In order to start your subscription you have to be connected to the Internet. Please disconnect from the LVPro camera if you are already connected.



LVSync prompts you to subscribe the first time you open LVSync. Please remember you must have an active Internet connection during your initial sign-up.

Tap "Dual View" to start the subscription process.



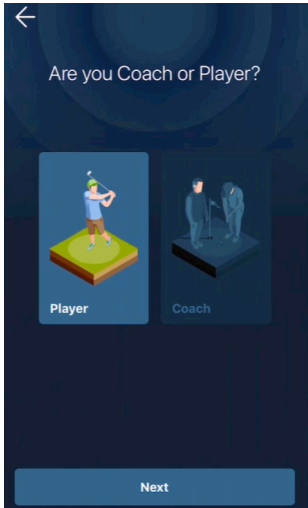
To access the free 6 month trial choose the "Yearly" billing option and create a new account.

If you already have a registered LVStudio "Profile" select "I already have an account".

## b. Create a LVStudio Profile

Follow the prompts and provide your profile information including (1) account type (2) email address, (3) Name, (4) Password. Once the main data has been entered, you will receive a verification code via email to the registered account. Please enter the verification code.

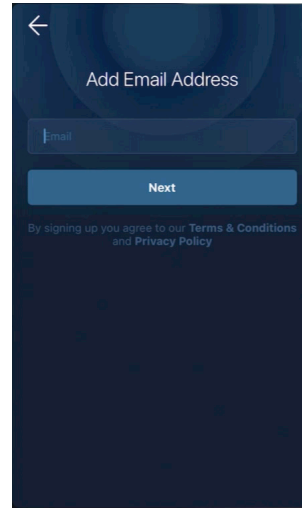
### 1. Account Type



There are 2 account types. At this time the two accounts act the same.

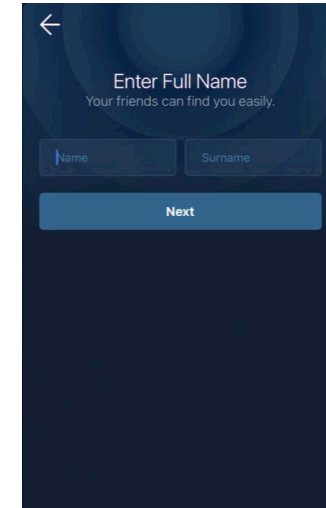
There may be additional options and costs for "Coach" accounts in the future.

### 2. Email Address

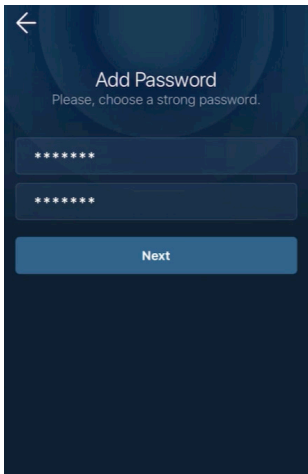


The email address is used for verification and also password recovery.

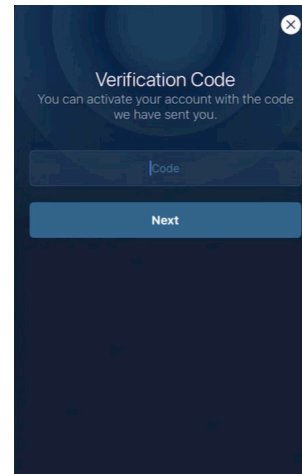
### 3. Full Name



### 4. Password



### 5. Verification Code



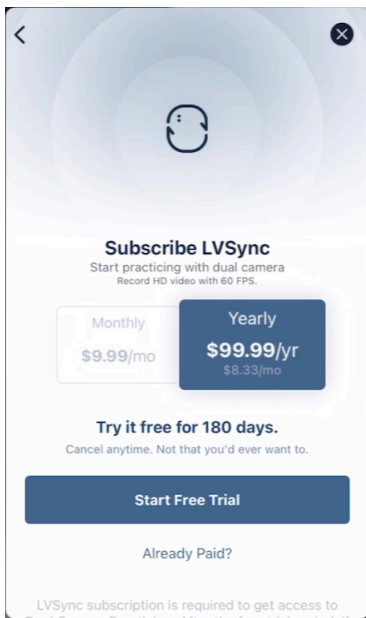
Your verification code will be sent to your registered email address. If you do not receive it within 1 minute of registering, please check your "spam" folder.

# 8 LVSync

## c. Subscribe

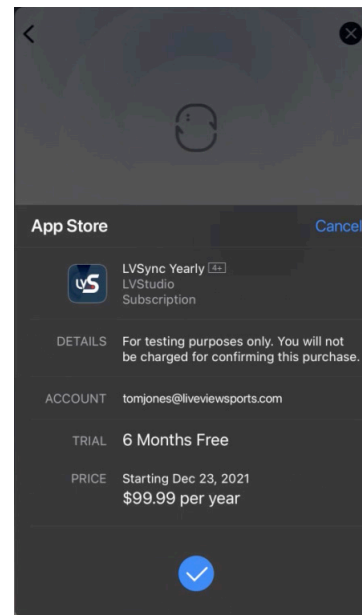
To subscribe to LVSync you will need your Apple App Store login with a payment method on file. If you are subscribing for the first time, you will not be charged until the 6 month trial expires and you can cancel any time prior to the end of the trial without incurring any charges.

### App Store Payment



Select the annual subscription to access the 6 month free trial.

### App Subscription Confirmation.



Your payment method is tied to the Apple App Store and your subscription has to be managed from there.



# 8 LVSync

## d. Launch LVSync



Once you have completed your subscription on your viewing device, reconnect you LVPro or LVPro2 camera and open LVSync by tapping on the LVSync icon.

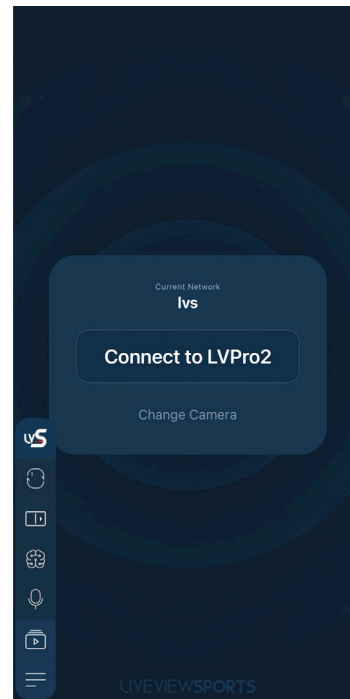
### 1. Camera Setup

LVSync requires use of Portrait Mode. This means that the LVPro camera must be turned sideways during LVSync use. The LVPro2 operates in Portrait mode by default and can be used in regular vertical mode.

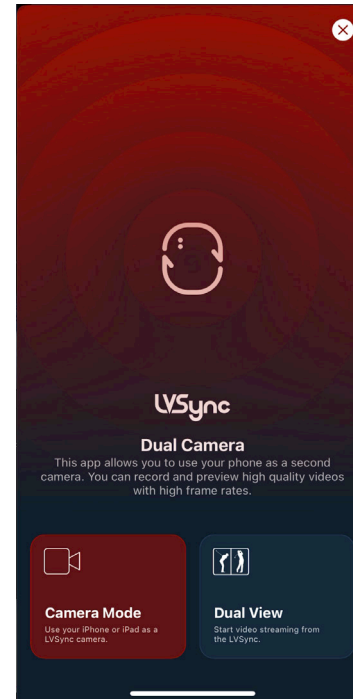


### 2. iOS Camera setup.

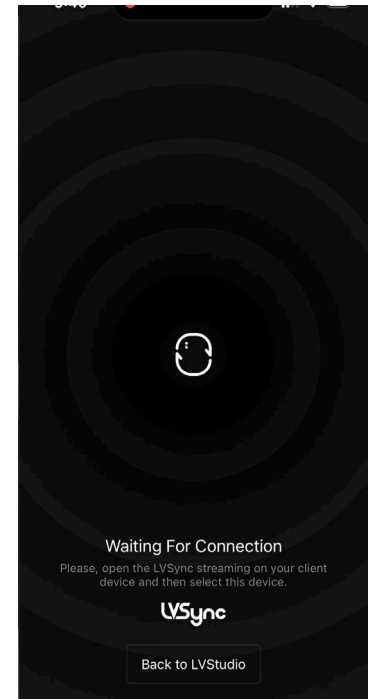
To activate the LVSync camera, open the LVStudio App, open LVSync and select "Camera Mode". It is not necessary to connect the camera client to the LVPro2 because LVPro2 only supports one client connection to the Viewer device.



**WARNING: Do NOT connect the LVSync camera device to the LVPro Wifi.**



Select "Camera Mode" on your iPhone.



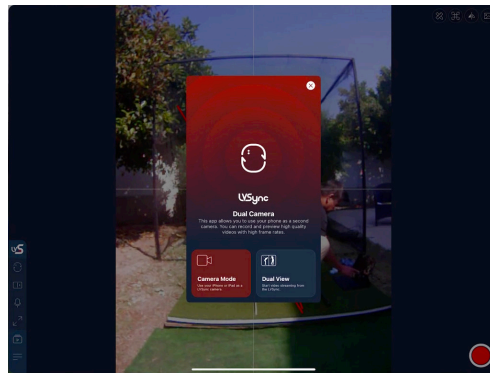
Your iPhone is now waiting for a Viewer connection.

### 3. iPad Viewer Setup.

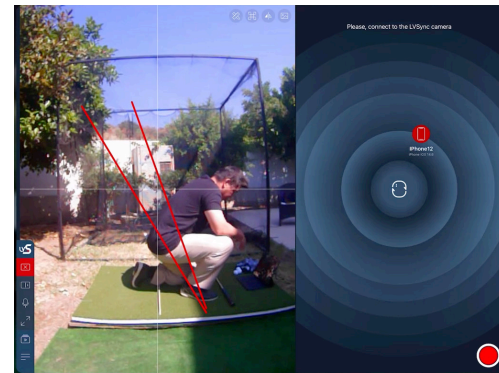
Once the LVSync camera has been activated, it can be found on the iPad by going into "Dual View", and then looking for your iPhone device name in the right display pane. Tap on the device and it will move into the center and turn green when the connection is established. Once the LVSync camera has been connected, it will start streaming video after a few seconds of connection.



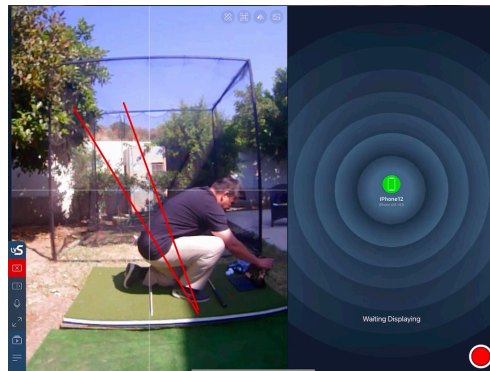
LVSync Camera waiting for connection from iPad Viewer.



Select "Dual View" on your iPad.



You can see the LVSync camera by device name in the right viewing pane. Tap on your device to activate it.



Once the device has been selected, it will turn green and move into the center to start the connection process.



Video will display once the connection is complete.

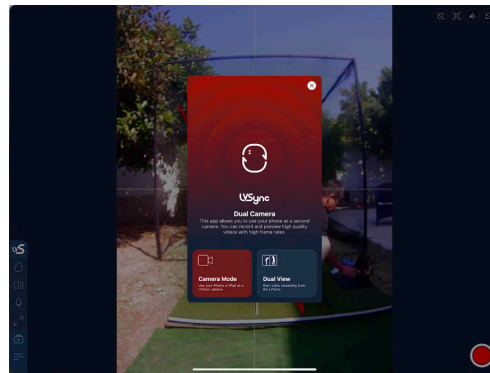


## e. Password Recovery.

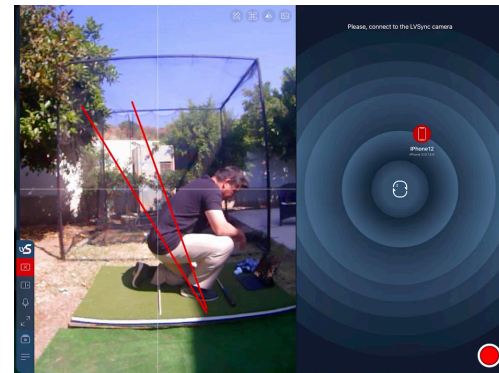
Once the LVSync camera has been activated, it can be found on the iPad by going into "Dual View", and then looking for your iPhone device name in the right display pane. Tap on the device and it will move into the center and turn green when the connection is established. Once the LVSync camera has been connected, it will start streaming video after a few seconds of connection.



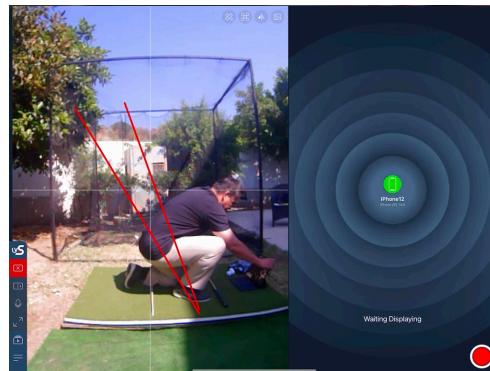
LVSync Camera waiting for connection from iPad Viewer.



Select "Dual View" on your iPad.



You can see the LVSync camera by device name in the right viewing pane. Tap on your device to activate it.



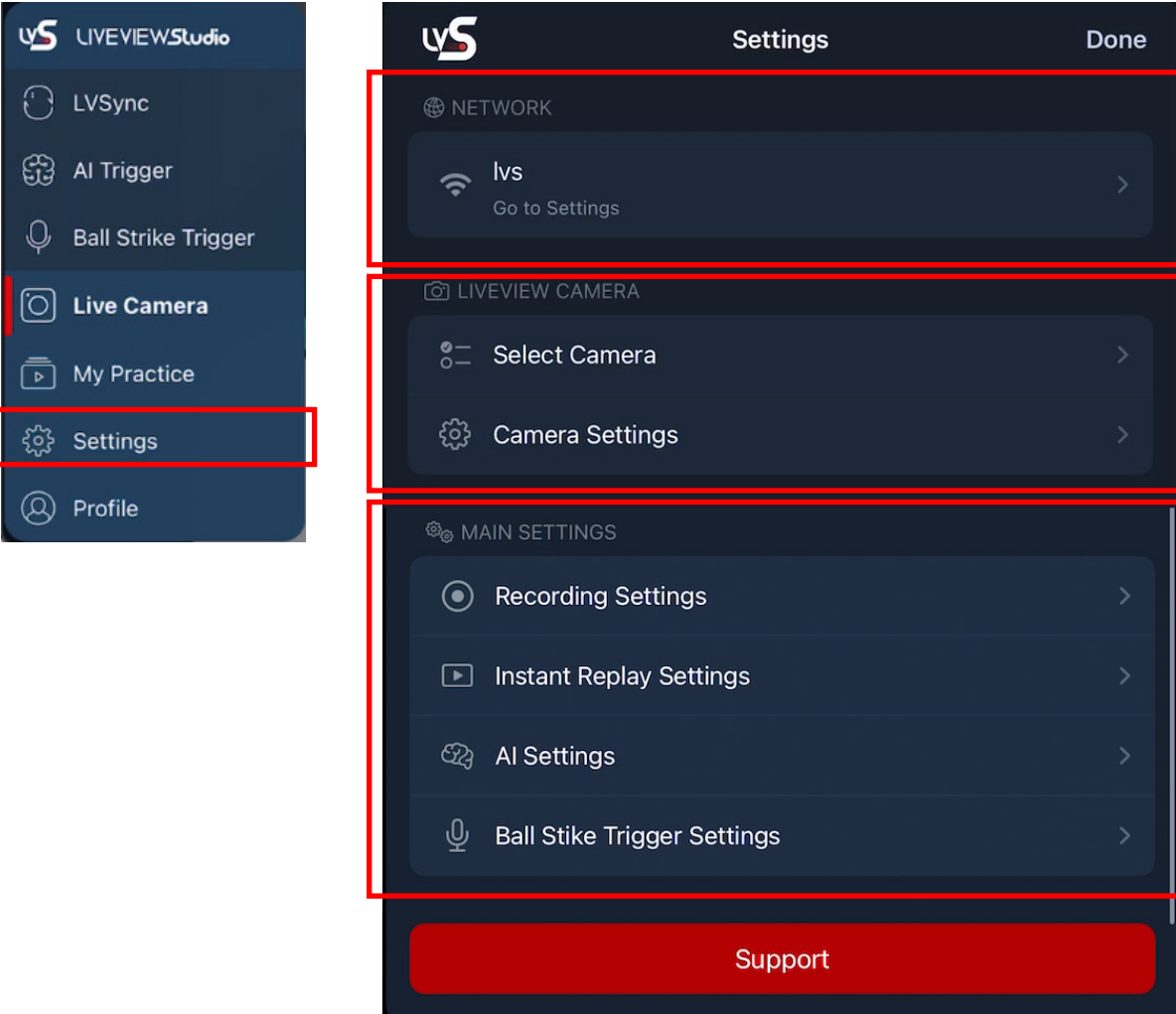
Once the device has been selected, it will turn green and move into the center to start the connection process.



Video will display once the connection is complete.



"Settings" provide a central place to modify the camera and camera functions to suit your preferences. In general the Settings break into three sections:



The image shows two screenshots from the LIVEVIEWStudio app. The left screenshot is the main menu with the 'Settings' option highlighted by a red box. The right screenshot is the 'Settings' screen, also with a red box highlighting the 'Settings' option in the menu. The 'Settings' screen is divided into three sections: NETWORK, LIVEVIEW CAMERA, and MAIN SETTINGS. A red 'Support' button is at the bottom.

**Settings**

**NETWORK**

- lvs  
Go to Settings

**LIVEVIEW CAMERA**

- Select Camera
- Camera Settings

**MAIN SETTINGS**

- Recording Settings
- Instant Replay Settings
- AI Settings
- Ball Strike Trigger Settings

**Support**

**Network Settings**

Display the current WiFi status. In order to function properly, your device must be connected to a LVPro or LVPro2 hotspot. Selecting this setting will take you to the iOS App Settings and device WiFi settings.

**Camera Settings**

Set the streaming protocol based on your LVPro camera type. Also enables camera setting modifications.

**App Settings**

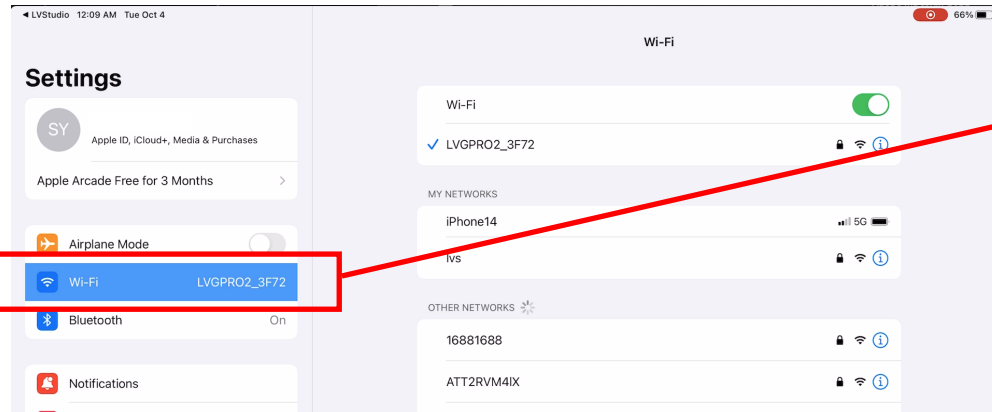
Change the App behavior for things like recording length, instant replay speed and number of loops, AI settings and Ball Strike trigger recording settings.

**Support**

If you need help, the in-app support button allows you to contact our technical team directly.

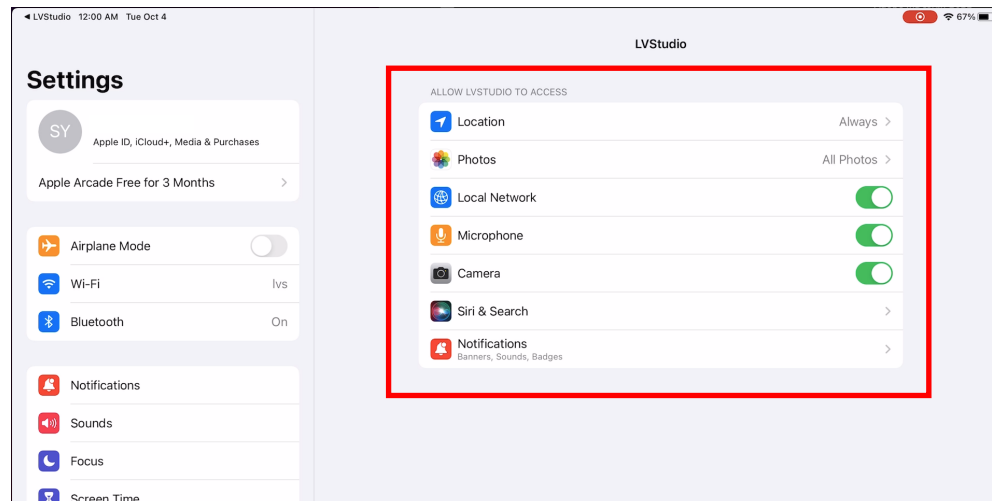
## a. iOS Settings

LVStudio needs access to some permissions from iOS. These are set in the standard iOS Settings.



Set device Wifi to camera hotspot. This will be a WiFi with the name of:

"LVGPRO2\_XXXX" or  
"LiveViewGolf\_XXXXX"



The key settings for LVStudio in the iOS App settings require:  
Location: "When Using" (allows LVSync Connection)

**Photos: "All Photos"** (enables 'save-to' and 'read-from' access from the iOS Photos App)

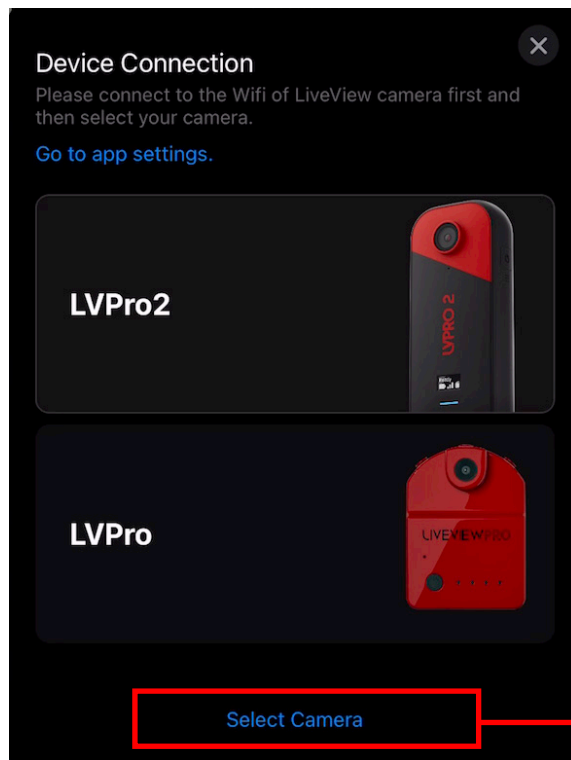
**Local Network: "On"** (allows video streaming from the LiveView Camera)

**Microphone: "On"** (Sound Trigger needs microphone to listen for swing events)

**Camera: "On"** (Required for LVSync camera mode)

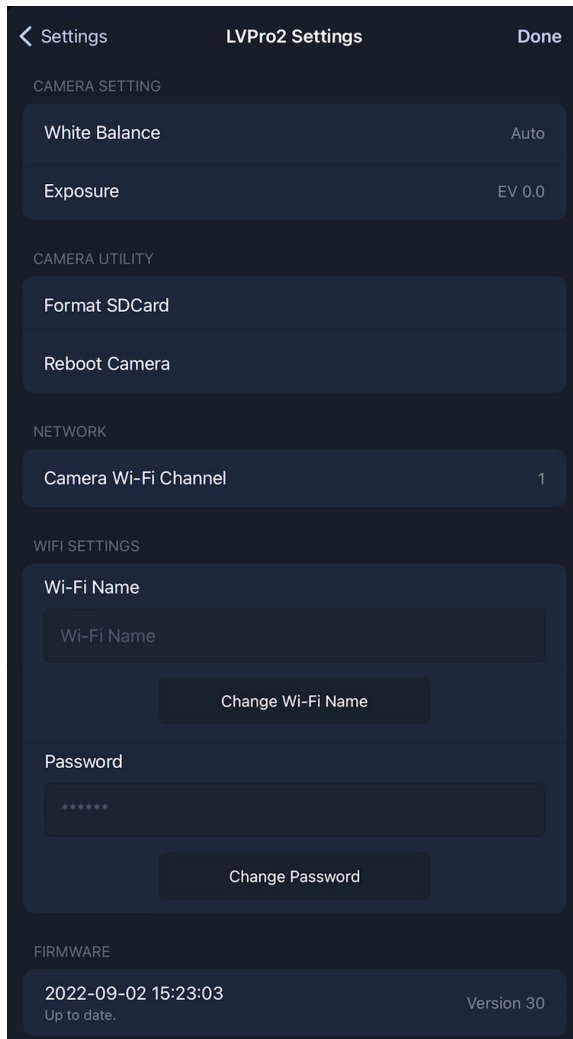
**b. Select Camera**

LVPro2 uses a completely different streaming protocol from the LVPro. As a result it is necessary to set the App to the correct camera client to view the video streaming from the Live View Camera. Select your camera in the "Select Camera" setting and set "Select Camera" to apply.



Press "Select Camera" to apply your setting.

### c. Camera Settings



#### Camera Settings offers the following options:

##### **White Balance:** (LVPro2 Only)

Changes color temperature point to make video look more “yellow” or “blue”. Default is set to “auto” automatic adjustment.

##### **Exposure** (LVPro2 Only)

It is possible to increase or decrease automatic brightness by increasing exposure from -2 (darker) to +2 (brighter). Please note that it may not be possible to increase brightness in dim lighting situations as the automatic exposure may already be at the limit. Exposure brightness is limited by the amount of available light and the camera’s native 120FPS frame rate.

##### **Format SDCard** (LVPro2 Only)

In case of SDCard errors, it may be necessary to clear and reformat the SDCard. We recommend formatting all new SDCards prior to use.

##### **Reboot Camera**

Reboot the LVPro2 camera following setting change of

- WiFi Channel
- WiFi Name
- Camera Password

##### **Wi-Fi Channel**

Changing WiFi channel can improve video quality by moving away from interfering devices that are broadcasting on the same or near WiFi frequencies. We recommend at least 4 channel band separation for best effect. (i.e. from 1 -> 5 or 6->10).

Reboot camera after Channel change.

##### **Wi-Fi Name**

It is possible to customize the camera WiFi name from default “LVPro2” or LiveViewGolf” to any other name. Make sure to apply the change by tapping the “Change WiFi Name” button.

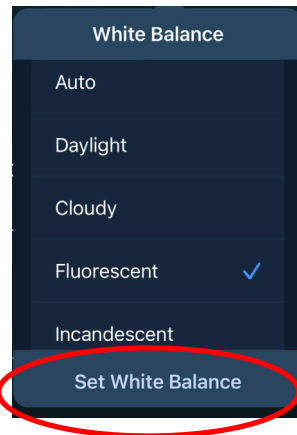
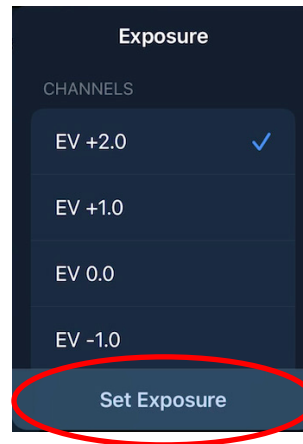
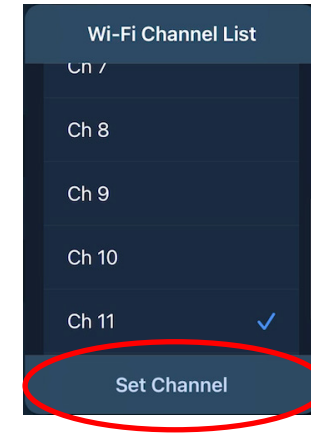
Reboot camera after WiFi Name change.

##### **Change Password**

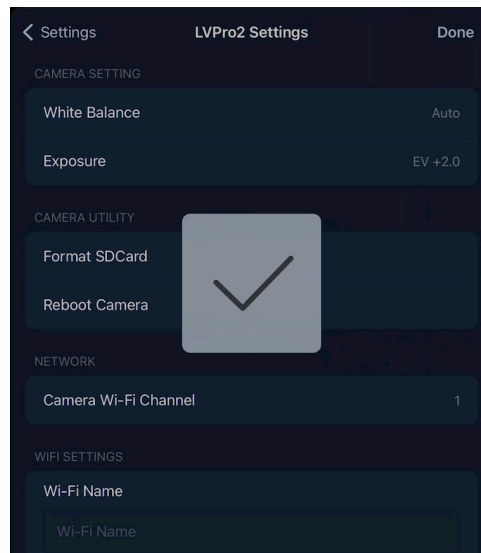
The default camera password on the LVPro2 is “1234567890”, there is no default password on the LVPro. You can change the password using this function. Make sure to apply the change by tapping the “Change Password” button.

Reboot camera after Password change.

It is possible to reset the camera Password back to default by using the reset button for the LVPro2 or LVPro. Please consult your manual for the location of the reset button.

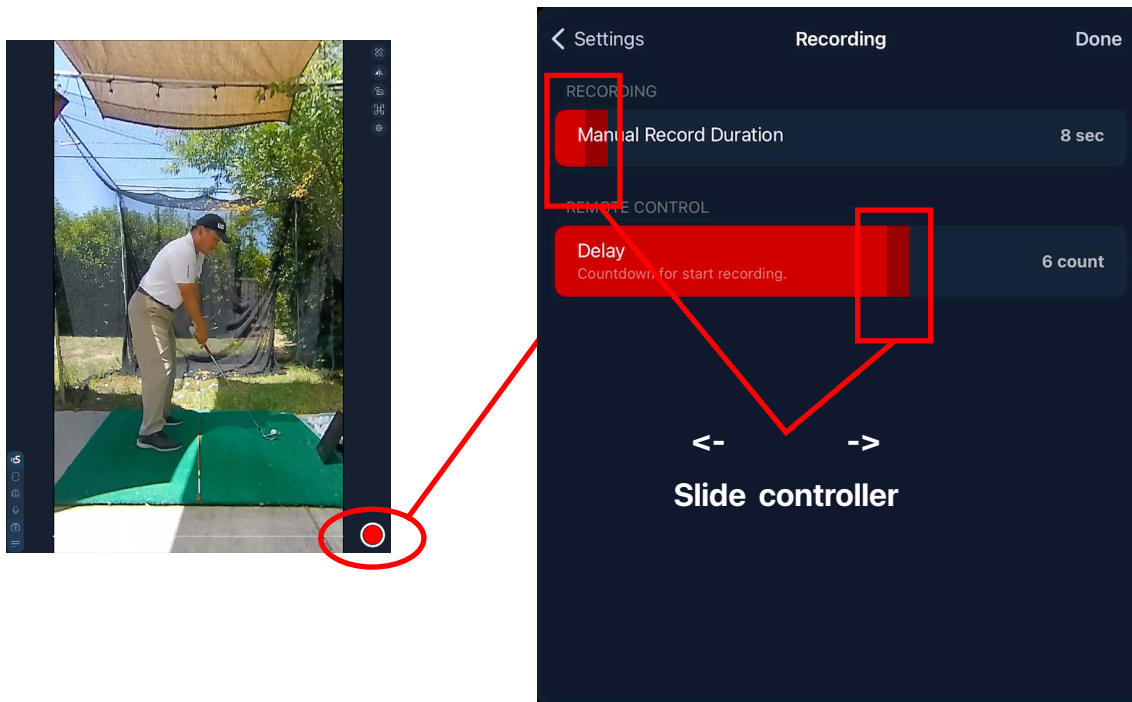
**White Balance****Exposure****WiFi Channel**

Following camera settings changes, make sure to use the button at the bottom to apply the changes. You will see a check mark if the change is successful.



### d. Recording Settings

"Recording Settings" apply to manual recordings made using the red recording button.



#### Manual Record Duration

Can be set from 1-59 sec maximum. Slide the controller left or right to increase or decrease recording time.

#### Delay

Provides a countdown timer to allow ready time prior to start of swing recording.

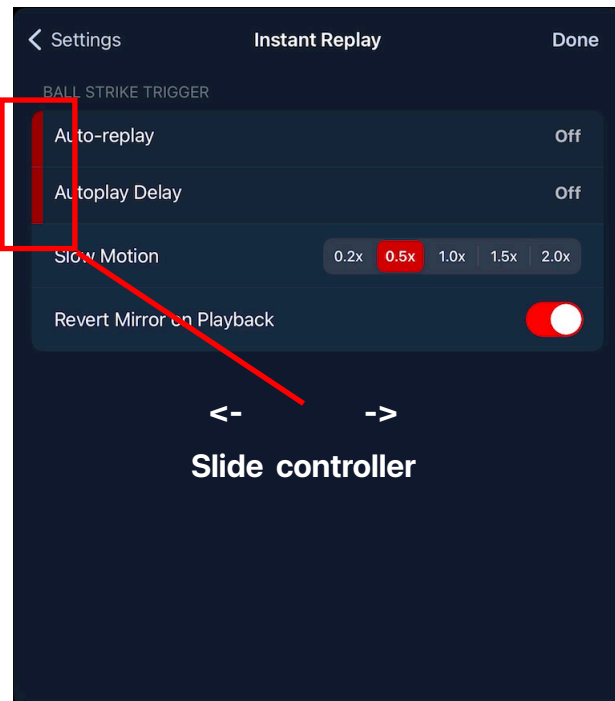
For **single swing capture** use a 3-4 second countdown followed by 6-7 seconds of recording. Manual recordings can be viewed in the MyPractice library or using the Instant Replay feature.

**Multiple swing** recordings should use "0" delay countdown with "45"- "59" seconds of duration.



### e. Instant Replay Settings

Instant Replay sets LVStudio to play back recorded videos automatically after capture. Using instant replay with automatic swing capture using Ball Strike Trigger or AI Trigger makes reviewing swings effortless.



**Auto Replay** [Off - 9x] determines how many times a recorded video loops before the App goes back to ready mode. Replay can be set from "Off" (no replay) to "9x" (9 video loops of recorded swing).

**Autoplay Delay** [Off - 11] LVStudio can wait before starting replay to give you time to prepare. Wait time can be set from "off" up to 11 seconds.

**Slow Motion** applies a speed reduction to slow down action for easier viewing. Slow motion factors are:

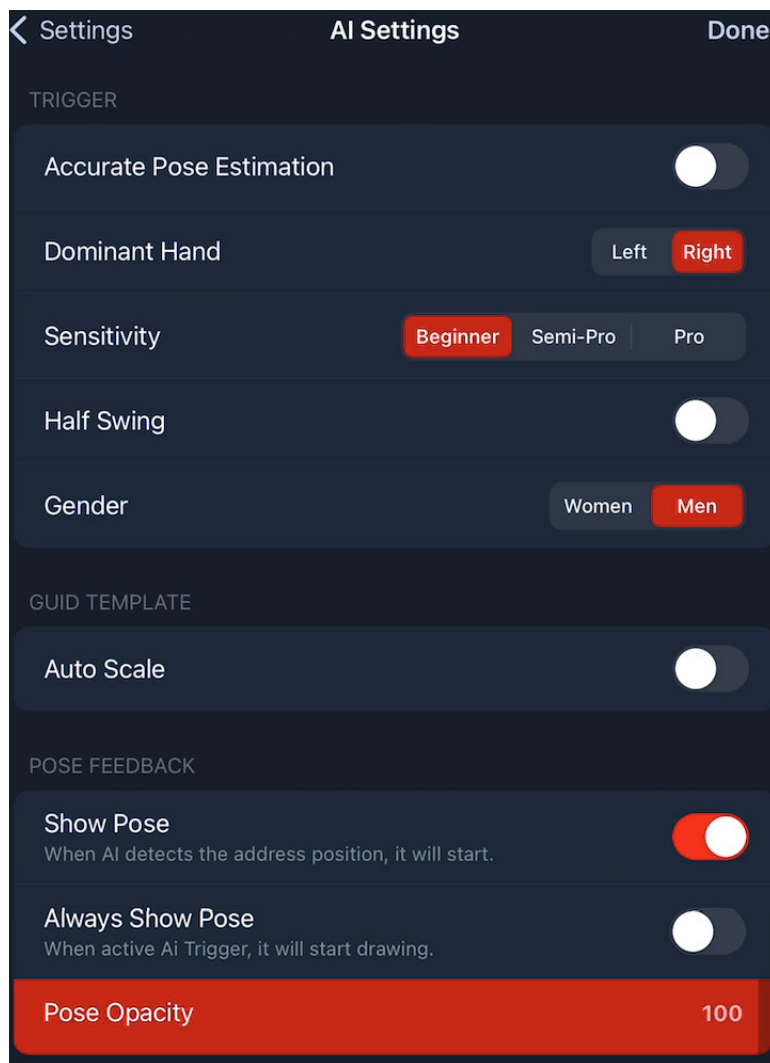
- 0.2x - 20% normal speed. Greatest slow motion.
- 0.5x - 50% normal speed
- 1.0x - Normal Speed
- 1.5x - Accelerated playback
- 2.0x - Double speed playback.

#### Revert Mirror on Playback

If this is "On", when using "Mirror" mode during live preview, video is flipped back to normal mode during instant replay. This prevents right handed golfers flipping to left handed golfers in the recorded video.

## f. AI Settings

AI Settings controls how the AI works when the AI trigger is used



**Accurate Pose Estimation** - provides more accurate pose feedback. It is also much more CPU intensive and should be left "Off" on all but the latest Apple CPU devices (M1 or M2 processor)

**Dominant Hand** - Left handed golfers should adjust the model to "left" hand for the AI model to switch directions on all movements. (this function is not yet supported, we recommend left handed golfers use Sound trigger to capture recordings)

**Sensitivity** - The AI model will set more strict parameters when analyzing swing motion if the "Pro" model is selected. This means it will be more difficult to trigger a swing. If you find that the AI trigger is missing swings, set the model lower to "Semi-Pro" or "Beginner". Conversely if you are getting many false triggers, try setting the model stricter.

**Half Swing** - The model requires a full take away to trigger a recording. if you are practicing half shots, setting the model to "half-swing" will make the model easier to trigger. "Half-Swing" will also cause more false and accidental triggers. (this function is not yet supported)

**Gender** - This settings enables slightly different model variations that can follow some gender specific swing variations to improve swing trigger. (this function is not yet supported)

**Auto Scale** - Because the AI recognizes body dimensions and position, Auto Scale can scale and place line templates automatically to match your position and camera setup. Auto Scale is designed only for Templates created during AI recording.

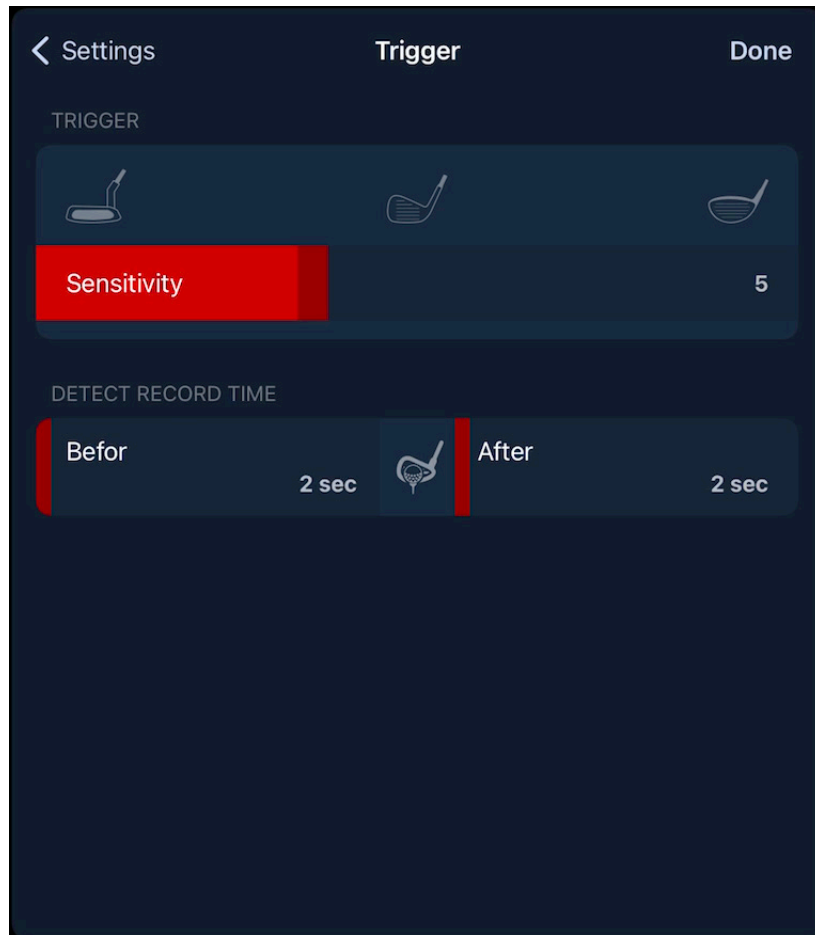
**Show Pose** - The set up pose triggers the AI to begin motion tracking for AI trigger recording. You can turn off the AI pose lines if you find them distracting.

**Always Show Pose** - Pose lines are turned off after the initial setup. It is possible to keep lines on at all times. If your App is not performing smoothly and you are using an older iOS device, the Pose display may be placing excessive strain on your CPU. In those cases turn Always Show Pose "off".

**Pose Opacity** - the lines can be made darker or more transparent using "Pose Opacity".

### g. Ball Strike Trigger Settings

"Settings" provide a central place to modify the camera and camera functions to suit your preferences. In general the Settings break into three sections:



#### Sensitivity

Microphone sensitivity determines the volume of sound necessary to trigger a recording. Setting the sensitivity lower, towards the putter means a softer sound can trigger a recording. Low sensitivity will lead to more false positive recordings.

Setting the sensitivity higher towards driver means a louder sound is required and may lead to some missed recordings.

Use a higher sensitivity at the driving range to avoid false triggers from surrounding golfers.

For normal at home use we recommend a sensitivity of 5-7.

#### Detect Record Time

Record times are set by time before and after ball impact

Before - captures the time in seconds before impact.

After - captures the time after impact.

The minimum settings are 2 seconds for each of these settings.