

LV Studio 1.3

User Guide

1. Live View
 - 1.1 Mirror Mode
 - 1.2 Portrait Mode
2. Settings
 - 2.1 WiFi Info and Display Settings
 - 2.2 Recording Settings
 - 2.3 Automatic Replay
 - 2.4 Remote Control
 - 2.5 Camera Settings
3. Recording
 - 3.1 Automatic Recording
 - 3.2 Manual Recording
 - 1.2 Portrait Mode
4. myPractice
 - 4.1 Delete Videos
 - 4.2 Playback
 - 4.3 Share/Trim
5. Drawing
 - 5.1 Special Shapes
6. Guided Mirroring



1. Live View

Full Menu

- LVSync
- Split Screen — 1. Adds 2nd window for Content video.
- Ball Strike Trigger — 2. Activates microphone for automatic swing recording.
- Full Screen — 3. Hide menus and controls
- Live Camera — 4. Return to home screen camera view
- My Practice — 5. Saved swing recordings
- Content — 6. Reference content library.
- Settings — 7. App and Camera Settings.
- Profile

Display Options

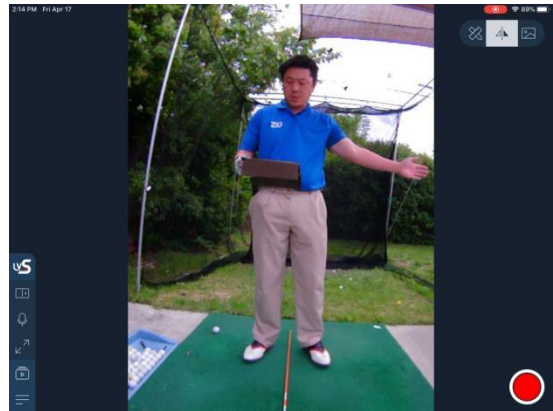
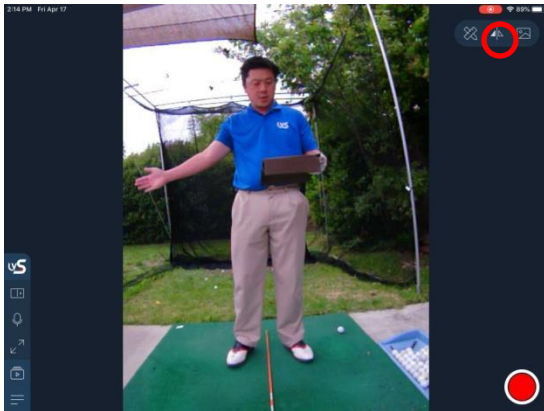
- 8. Rotate camera view portrait or landscape
- 9. Mirror display mode
- 10. Alignment Grids
- 11. Drawing tools.

Manual Recording



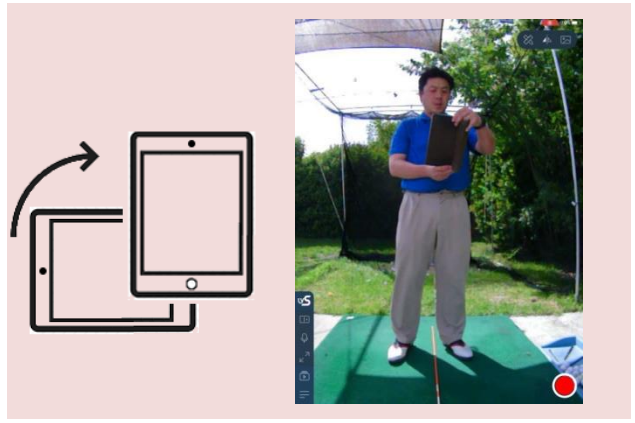
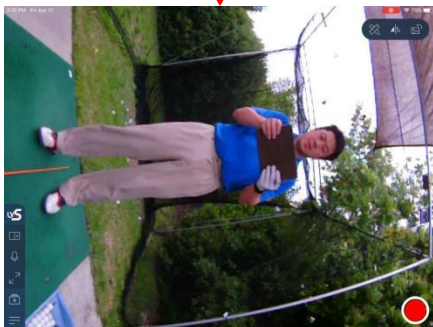
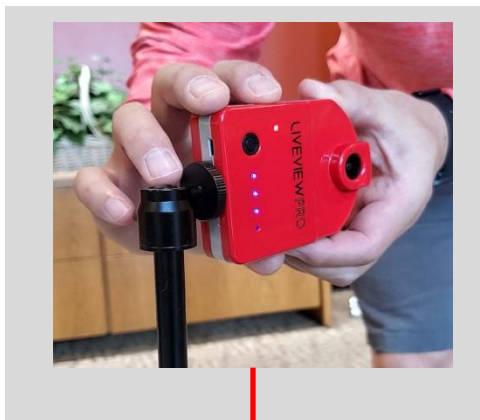
1.1 Mirror Mode

When activating the mirror view, the video is flipped horizontally to act like a true mirror to match your movements.



1.2 Portrait Mode

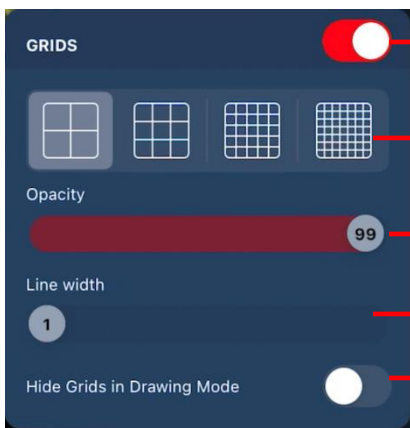
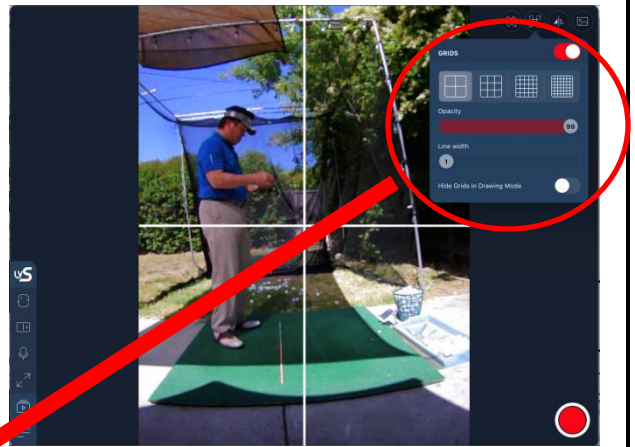
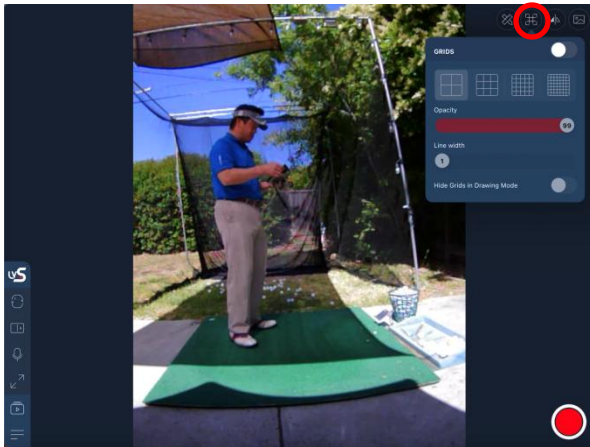
Rotate the camera to take advantage of the sensor width for reduced imaging distance. Then use "Portrait Mode" to adjust the UI to match the camera orientation





1.3 Alignment Grids

Alignment Grids can be added to help align your body or target line in the camera frame.



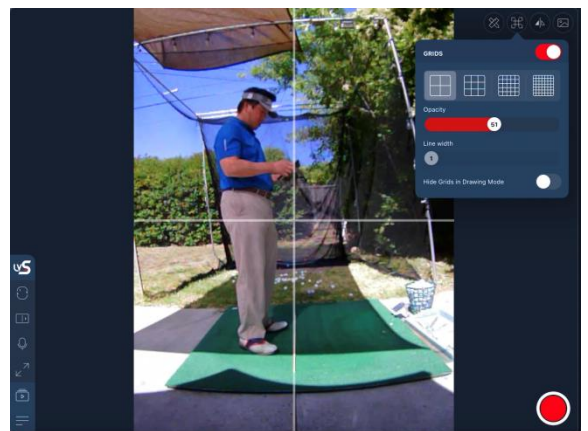
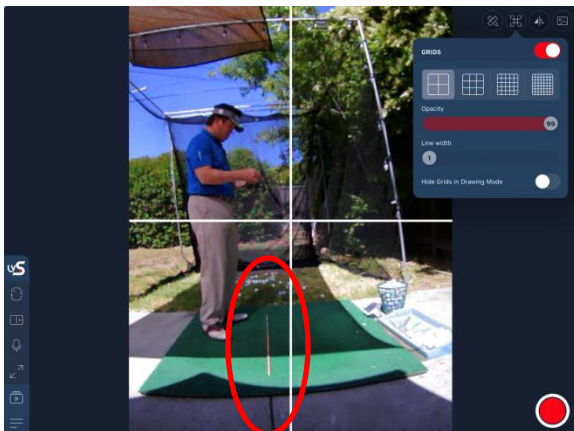
1. Grids "On/Off"

2. Grid Density

3. Opacity to make lines more transparent

4. Line Thickness

5. Remove Grid when using Drawing Tools

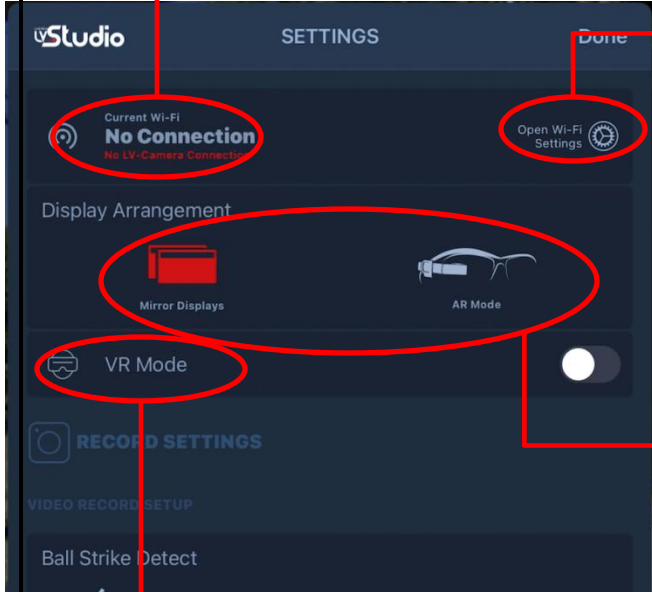


Use Grids to align your camera to target and plane line.



2. Settings

2.1 WiFi Info and Display Settings



Current WiFi Connection (This should show LiveViewGolfXXXX when connected)

Open WiFi Settings. Use this to connect your Live View camera to your device.

Display Arrangement is available for external displays via HDMI adapters such as TV or LV-AR Headset (sold separately).

1. In AR Mode the phone screen can be turned off and locked to prevent accidental touches.
2. AR Mode also hides the main UI in the external display.

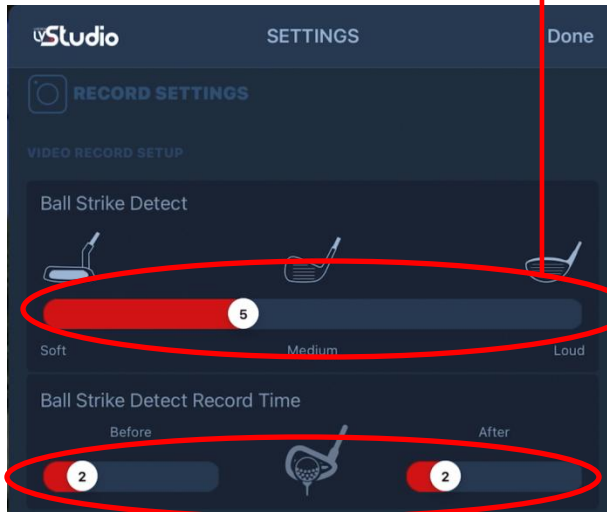
LV-AR

VR Mode is for use with VR Goggles and splits screen output into 2 duplicate images. Leave VR mode off unless using with VR Goggles.



2. Settings

2.2 Record Settings



Ball Strike Detect – sets the trigger sensitivity for **automatic recording**.

-When the trigger is set to soft it is possible to use a putter to trigger recording. Using a soft trigger in a noisy environment will cause a lot of false positives.

- A loud trigger will filter surrounding noise but may not capture your swing reliably.

Ball Strike Detect Record Time – trims **automatic recording** videos to capture backswing and follow through.

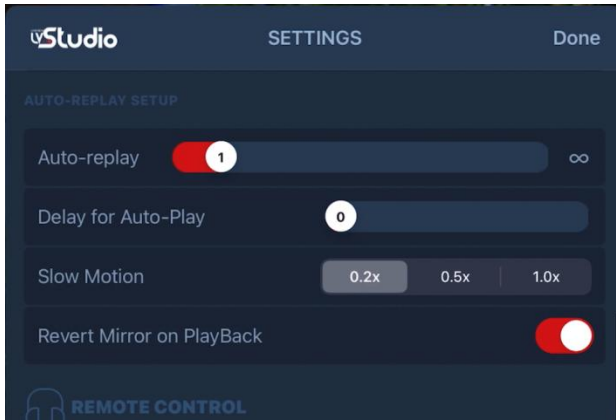
Before – sets the lead time (in seconds) to record prior to impact.

After – sets the follow through time (in seconds) after impact.



2. Settings

2.3 Automatic Replay



Auto Replay – allow recordings to play back automatically after capture. Slide from 0-10 to set the number of replays. “0” is No replay at all, “10” is 10 repetitions before releasing back to standby mode.

Delay for Auto-Play – LVStudio will wait X seconds before starting playback after recording is complete.

Slow Motion – Replay can be set to slow motion to make it easier to see details.

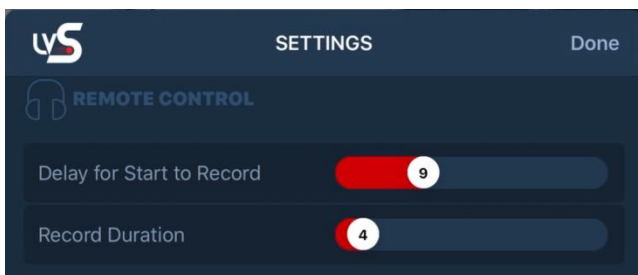
- 0.2x = 1/5 normal speed

- 0.5x = ½ normal speed

- 1.0x = normal speed.

Revert Mirror on PlayBack – Activate to switch back to normal mode during playback if live camera mode is switched to reverse mirror.

2.4 Remote Control



Delay for Start to Record – Sets a countdown timer after button press before recording. This gives you time to prepare for the swing capture to avoid excessive trimming.

Recording Duration – Total recording time in seconds. This allows one push recordings with automatic playback after each swing.

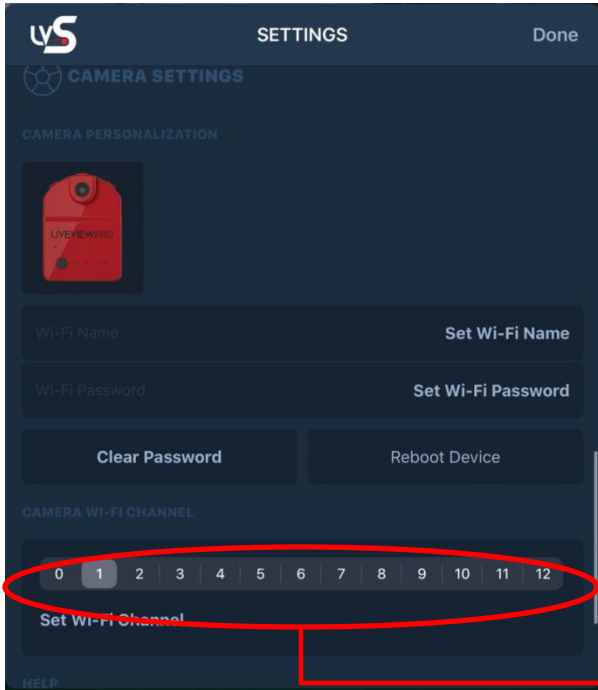


Smart Remote
(sold separately)



2. Settings

2.5 Camera Settings



All changes to Camera settings must be made while the camera is "on" and connected to the App by showing video.

WiFi Name – change camera SSID (hotspot) Name. The factory default setting is "LiveViewGolfxxxxx"

Enter a custom name then **tap on "Set Wi-Fi Name"** to apply.

WiFi Password – Setting a WiFi password protects your camera connection.

Enter a password and then **tap on "Set Wi-Fi Password"** to apply.

Set WiFi Channel – If your camera is not displaying video smoothly, changing channel on the camera may reduce interference from other devices and improve frame rate for smoother video.

When changing channel we recommend moving 4 bands up or down to reach maximum separation with an interfering signal. For example if you are on channel 1, move to channel 5 (+4) to try to clear signal.

Note that in iOS the current channel number is only based on your last setting. In iOS LVStudio cannot read the actual channel state of the camera, it can only set it. To read the current LiveView camera setting, use "Apple Airport Utility" for iOS.

Make sure to tap "Set Wif-Fi Channel" to apply.

If you forget your SSID or Password you can reset the camera back to default settings by inserting a pin in the hole to the right of the tripod screw. Press and hold for 8 seconds while the camera is on. The camera will reboot after this procedure and you will have to reconnect.

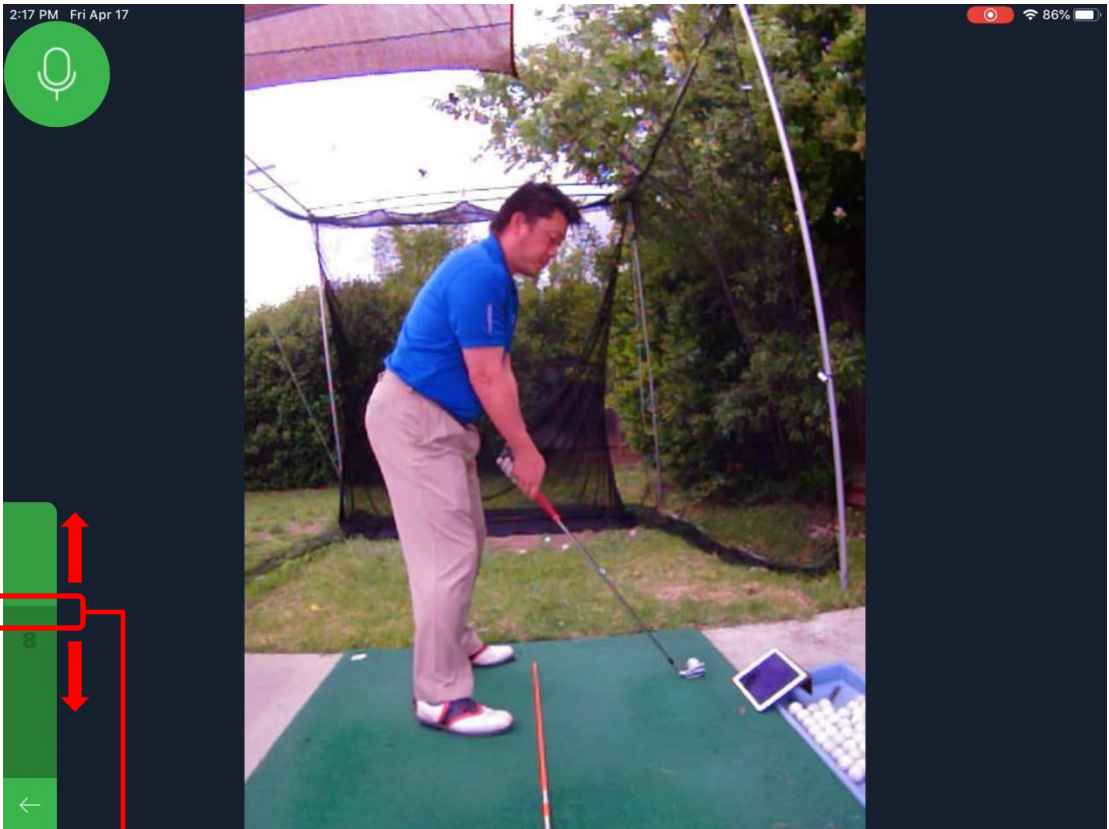




3. Recording

There are two ways to record video in LVStudio. (1) Automatic Recording using sound trigger and (2) Manual recording using the record button or remote control. For every day use we recommend using the automatic sound trigger

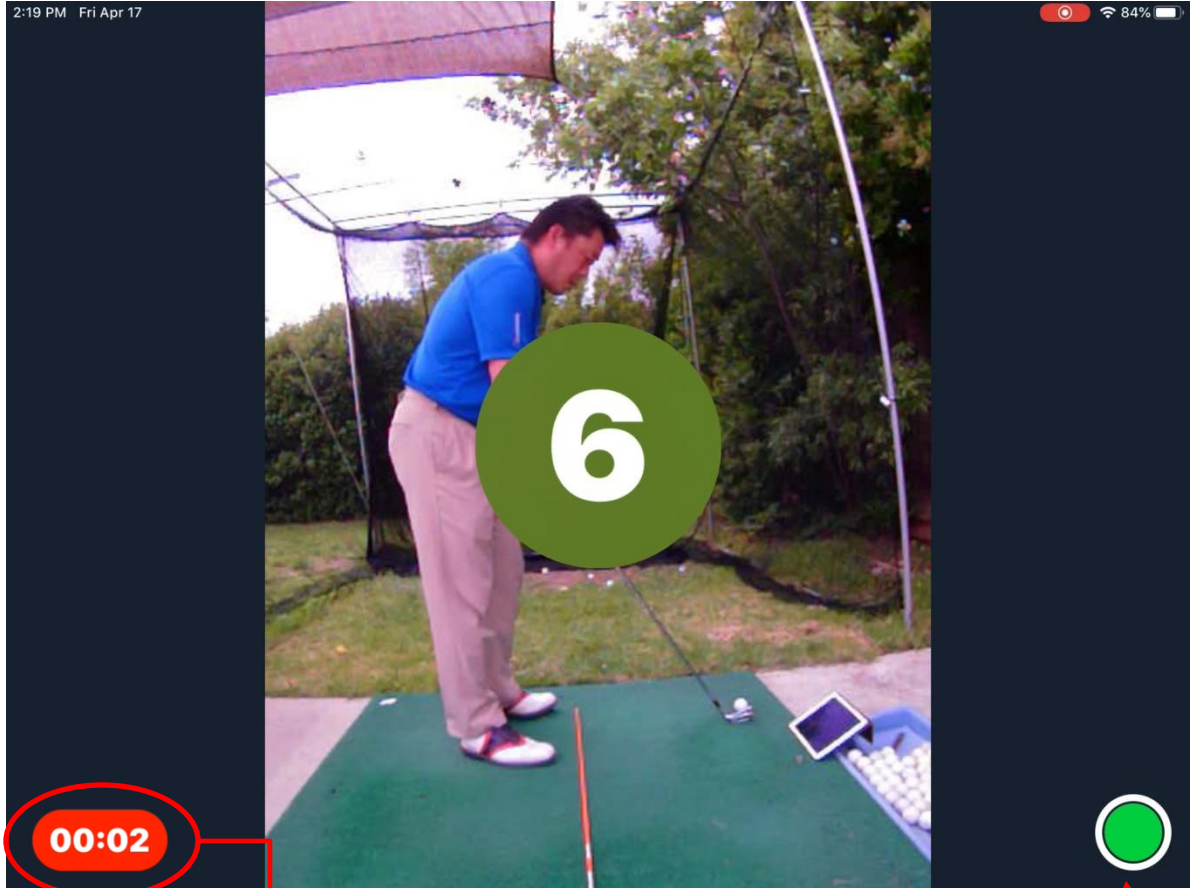
3.1 Automatic Recording



Use the microphone icon in the Live View main menu to start listening for impact. Once a strike has been detected, LVStudio will automatically record, and trim your swing based on the Automatic Recording Settings.

You can adjust the microphone sensitivity directly in the sound bar by sliding the darker green bar up or down.

3.2 ManualRecording



Use the manual recording mode to run continuous recordings up to 2 minutes. Pressing the manual record button provides a countdown warning timer linked to the Remote Control Settings.

- When recording, a clock will appear in the bottom left corner showing how long the current recording is.

- Press the green circle to stop recording.

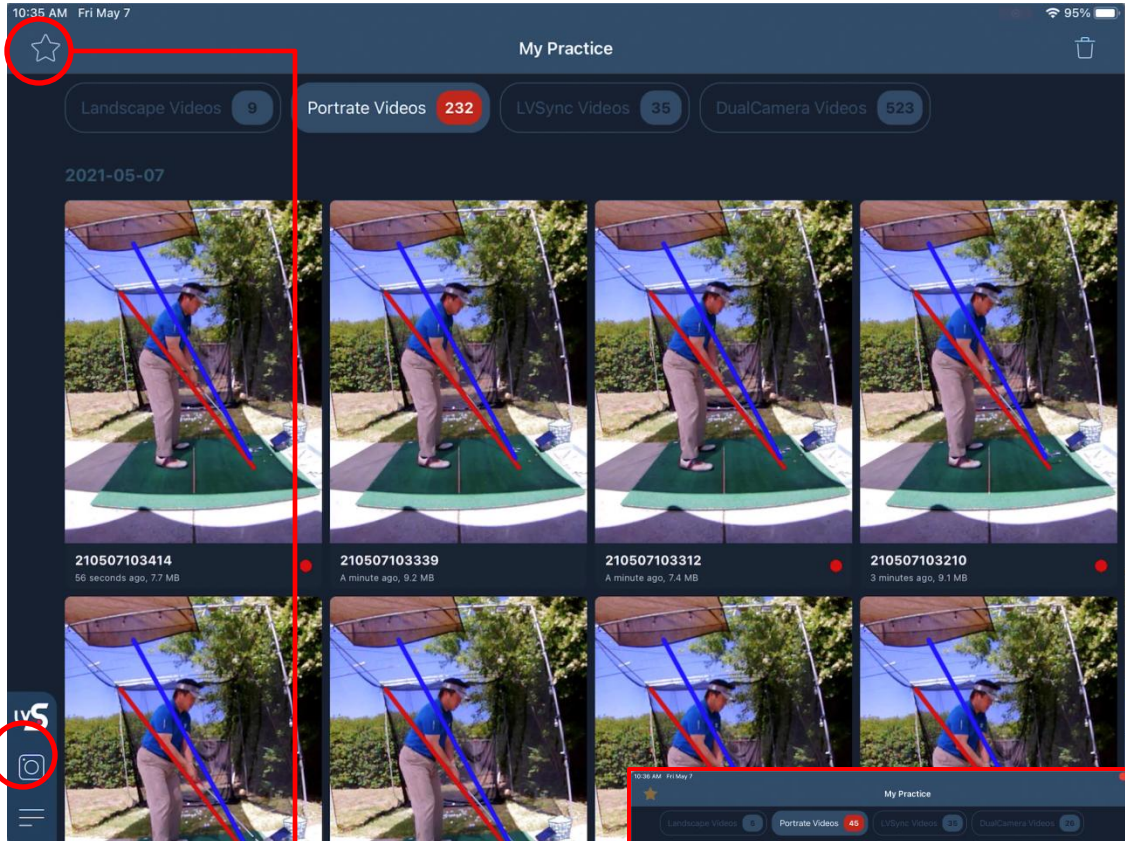


4. myPractice

All recorded files are stored in “myPractice,.” The library view shows you all recordings in chronological order with the most recent swing in the top left corner.

Videos are sorted by camera orientation and recording type:

LANDSCAPE | PORTRAIT | LVS SYNC | DUAL CAMERA




Favorites – Filter all of your videos to show only your “favorite” swings to reduce the clutter. Set “favorites” during playback (Section 4.2)

Return to “Live View” or anywhere else in the menu quickly from the menu bar.

4.1. Delete Videos

Delete – To delete your files use “Trashcan”, for multiple menu options.

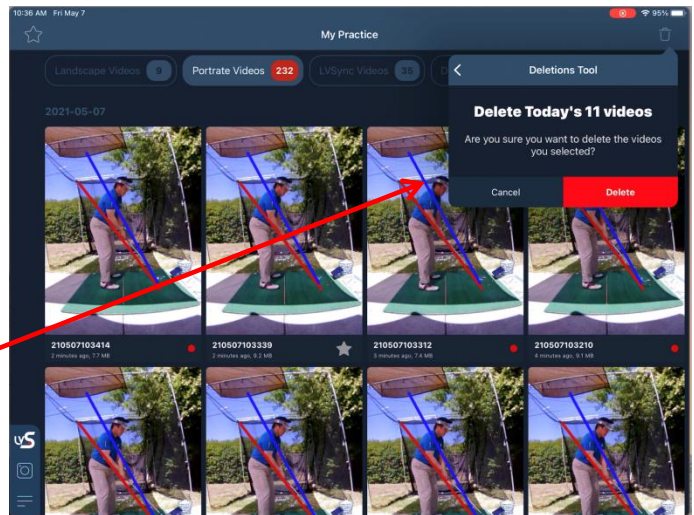
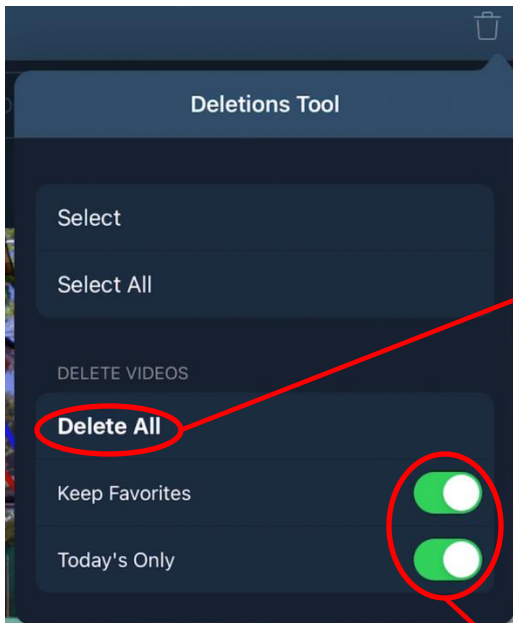
Delete Options

4.1.1 Select – Use “select” to choose which files to delete. Tap  to delete selected files.

4.1.2 Select ALL – Use “select all” to select and remove all videos. It is possible to “unselect” specific files after “selecting all.”

4.1. Delete Videos

Delete Options

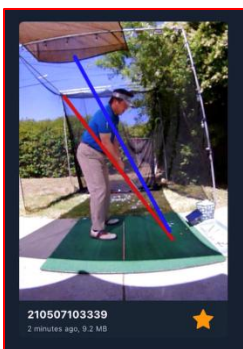


4.1.3 Delete All – Use “select all” to select and remove all videos. It is possible to “unselect” specific files after “selecting all.”

Use Toggles to protect files:

“Keep Favorites” – any file selected as “Favorite” is saved. See [Section 4.2](#) on how to mark “Favorites”

“Today’s Only” - Delete All files is limited to videos taken today. All older files are protected.



“Favorite” Videos are marked with gold stars.

4.2. Playback

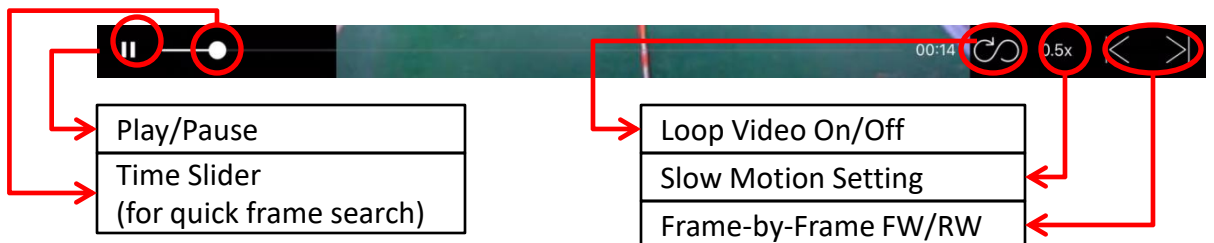


Playback is available from instant replay after recording or from “myPractice”

- Return to Library
- Drawing Tools**
- Share and Trim Video**

- Add Notes
- Mark as Favorite

Playback Control

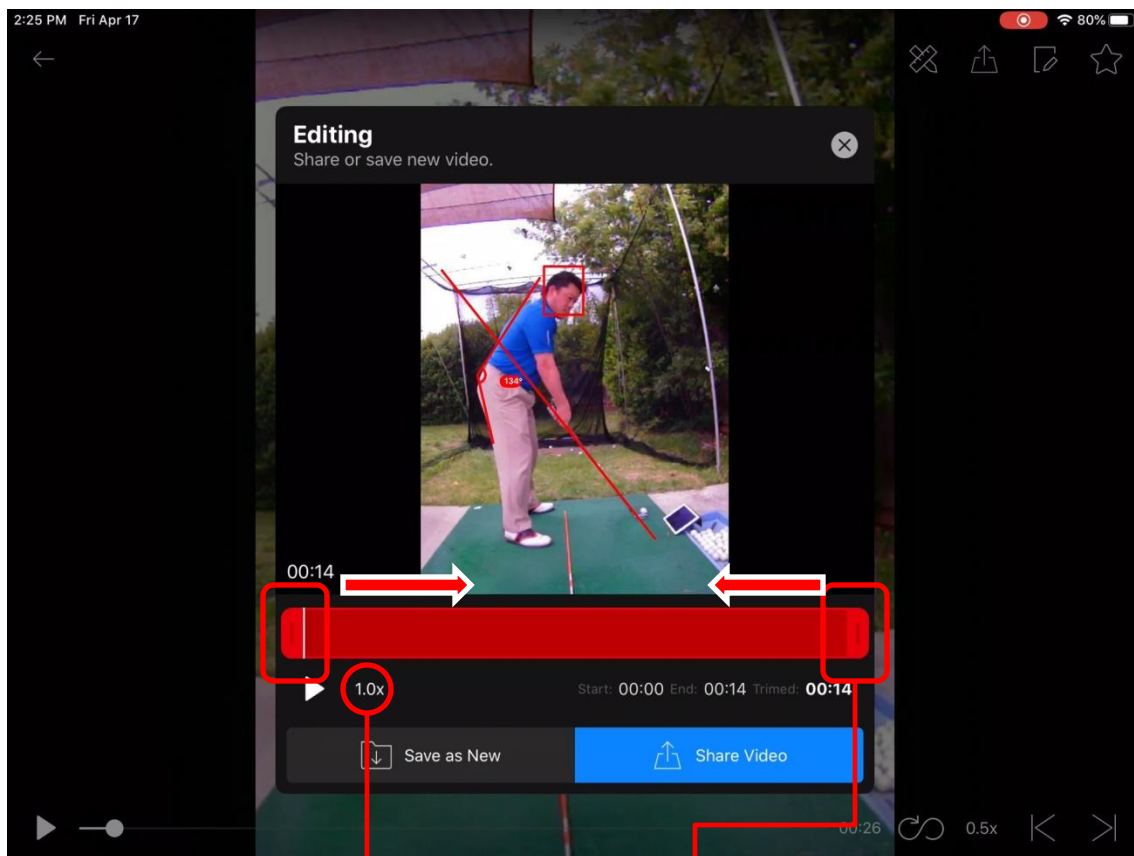


- Play/Pause
- Time Slider
(for quick frame search)

- Loop Video On/Off
- Slow Motion Setting
- Frame-by-Frame FW/RW



4.3. Share/Trim

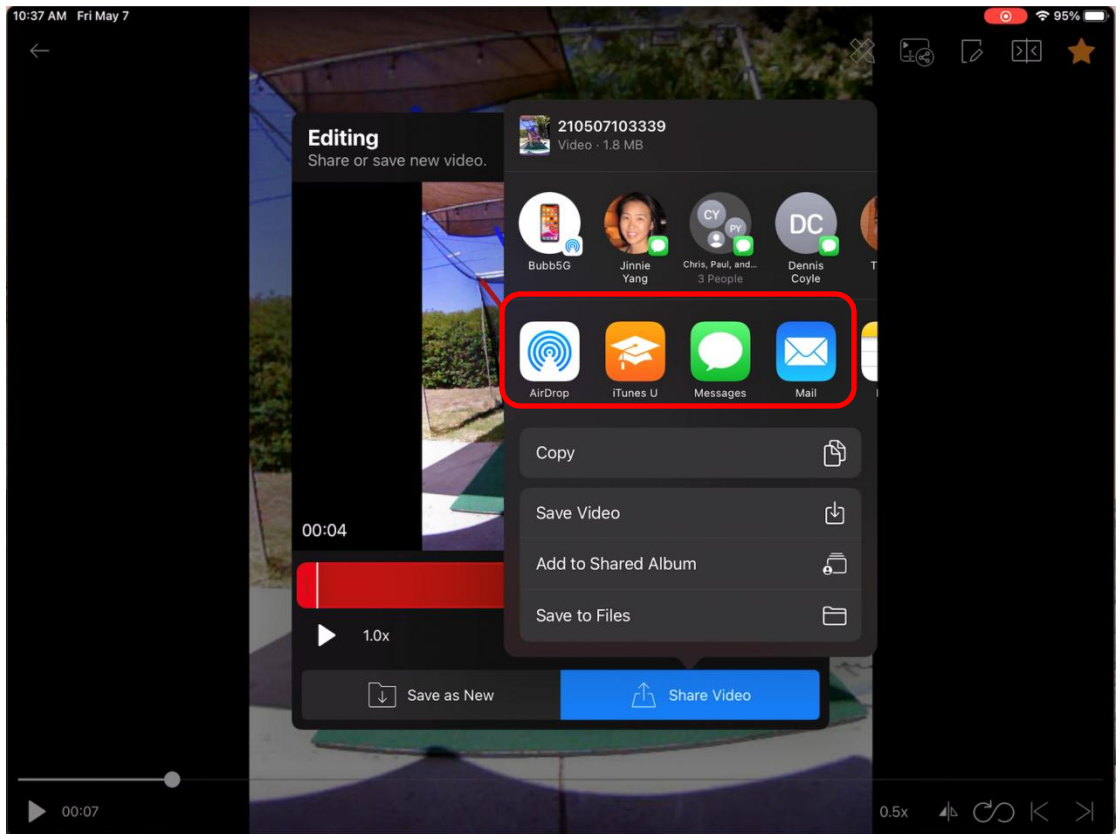


You can trim video and apply slow motion prior to sharing it by grabbing the end points and sliding in and out.

Set slow motion to export videos in slow motion.

“Saving as New” saves the trimmed version to “myPractice” with all markings.

4.3.1 Share



Share to Dropbox/Messages or Email

Use the app icons to share to other apps including Text Message, Email, or other Social Media Apps.

Save Video

Saves new copy of video to your "Photos" on iOS or File System on Android.



5. Drawing

Drawing tools allow drawing lines, circles, rectangles and free hand writing.



	Exit Drawing	Frame Control		-Line Thickness -Color Selection
	Move Shapes			-Add Existing Template -Save New Template
	Shape Selection			-Undo Last Shape -Clear All Drawings.



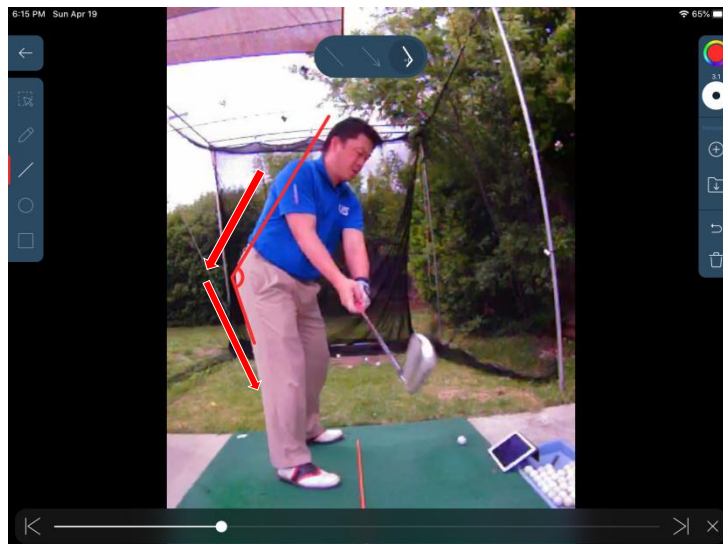
5.1 Special Shapes



“Free Drawing” allows drawing arbitrary lines and shapes



“Internal Angle” Under “Lines” the internal angle tool shows the angle between 2 lines. The 2 lines must be drawn in the same direction for measurement.





6. Guided Mirroring

Guided Mirroring is extremely powerful and unique to the LVStudio practice system. GM allows you to bring in a reference swing for constant comparison during your practice. This constant comparison helps you to observe subtle differences and learn intuitively.

